

# Shelby County Beekeepers Association



A newly formed Beekeeping association, made up of persons interested in promoting beekeeping in the Shelby County area.



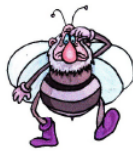
From February through October, meetings are held on the second Thursday of each month at 7:00 p.m. at the Shelby County Extension Building, located on 1117 Frankfort Road, Shelbyville, Kentucky. Everyone is welcome, whether you have beekeeping experience or just want to learn about beekeeping. Friendly and helpful people are willing to answer your beekeeping questions.

For general information, contact the Shelby County Extension Office at 502-633-4593. For information about joining the Shelby County Beekeepers Association, contact Becky Collier at 502-633-7619.



Honeybees are raised for several reasons - their honey, their value as crop pollinators for gardens and fruit trees, and for the joy of working and learning about this industrious, social insect. Beekeeping is fun, as a family activity or as a pastime for one!

Do you know there are three types of bees in every hive? The **Queen**, lays thousands of eggs and is surrounded by several thousands of **workers** and a few hundred **drones**. We invite you to come to a meeting and learn the importance of each one!



## Shelby County Beekeepers Association:

**President:** Buddy Bowles

**Vice-President:** Jon Freddell

**Secretary/Treasurer:** Becky Collier

