

Ky FarmStart

Kentucky's beginning farmer program is a 36 hour course designed for farmers with less than 10 years farming experience.



Critical farm management issues and potential topics include:

- ◇ *Farm Management*
- ◇ *Marketing*
- ◇ *Enterprise Evaluation*
- ◇ *Financial Management*
- ◇ *Nutrient Management*
- ◇ *Evaluation of Natural Resources*
- ◇ *Legal Risk*
- ◇ *Government Resources*
- ◇ *Business Plans*
- ◇ *Production*
- ◇ *Leadership Development*

COOPERATIVE EXTENSION SERVICE



Oldham County Cooperative Extension Service

Traci Missun

Oldham County Extension Agent for
Agriculture and Natural Resources

Michael Boice

Oldham County Extension Horticulture Assistant

1815 North Highway 393
La Grange, KY 40031

Phone: 502-222-9453

Fax: 502-222-7930

E-mail: traci.missun@uky.edu or
michael.boice@uky.edu

Ky FarmStart

*Kentucky's Beginning
Farmer Program*

*A comprehensive workshop for
beginning farmers with
education on whole farm
management to provide the skills
needed for success in today's
agriculture profession.*



*Cooperative Extension Service:
Bullitt, Henry, Jefferson,
Oldham, Shelby, Spencer,
Trimble Counties*

**Oldham County
Cooperative Extension Service**
502-222-9453



Kentucky's Beginning Farmer Program

Curriculum

January 20, 2012 - Shelby Co. Office
9:00 a.m.—12:00 noon

Beginning Farmer Primer

- ◇ Enterprise Evaluation
- ◇ Mission & Goals
- ◇ Farm Inventory
- ◇ Business Plans

January 27, 2012 - Shelby Co. Office
9:00 a.m.—12:00 noon

Management/Record Keeping

- ◇ Management Styles
- ◇ Record Keeping
- ◇ Types of Records & Importance



February 3, 2012 - Oldham Co. Office
9:00 a.m.—12:00 noon

Governmental Resources

- ◇ Financial Resources
- ◇ Educational Resources
- ◇ Program Assistance Resources

February 10, 2012 - Henry Co. Office
9:00 a.m.—12:00 noon

Marketing

- ◇ Marketing Options for Ag Products
- ◇ Marketing Resources
- ◇ Market Outlook for Farm Commodities

February 17, 2012 - Shelby Co. Office
9:00 a.m.—??

Farm Machinery Show Field Trip

- ◇ Farm Equipment
- ◇ Farm Safety
- ◇ Group Trip to National FMS (group transportation available)

February 24, 2012 - Oldham Co. Office
9:00 a.m.—12:00 noon

Legal Risk

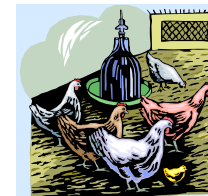
- ◇ Ag Issues & Policies
- ◇ Nutrient Management Regulations
- ◇ Renter's Rights
- ◇ Liability Issues
- ◇ Lease Agreements



March 2, 2012 - Henry Co. Office
9:00 a.m.—12:00 noon

Production

- ◇ Livestock
- ◇ Poultry
- ◇ Crops
- ◇ Forages
- ◇ Fruits & Vegetables



Dates/Locations TBA—Summer/Fall

Soils Management

Estate Planning

Leadership Development

Legislative Visits

Share Session & Graduation

Please contact your local Extension Service to register. Registration fees are \$75/person or \$125/couple, payable to Shelby County CES. Fees include program materials and a meal at each session.

Oldham County Cooperative Extension Service

Traci Missun
Extension Agent for Agriculture and Natural Resources

Michael Boice
Extension Horticulture Assistant

Phone: 502-222-9453
Fax: 502-222-7930
E-mail: traci.missun@uky.edu or michael.boice@uky.edu