

Marion Co. 2012 Piggy Bank Design Contest

Get Creative and \$tart \$aving!

Here is your chance to go “Hog Wild” and celebrate the **2nd Annual Kentucky Saves Piggy Bank Design Contest!**

Use your creativity to make a piggy bank and save your change. Soon, you can deposit it into a savings account. Start saving today and see how fast your change adds up!

Banks in Marion County are graciously hosting preliminary pageants for separate age groups. **Deliver your “piggy bank” to the appropriate location below between Wednesday, December 28 and Wednesday, January 11 for display and judging.** Age-group winners will then be judged and one County Winner will be selected for District judging. Photographs of district winning piggy banks will be displayed at the State Capitol in Frankfort, KY during Kentucky Saves Week—February 19-25, 2012.

Guidelines

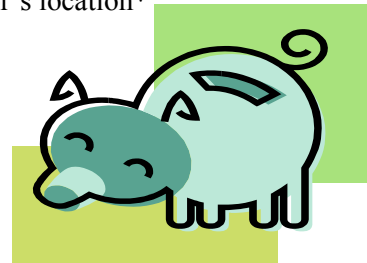
- ⇒ The bank should not exceed 12 inches x 12 inches x 12 inches (1 foot square).
- ⇒ Piggy banks must be able to hold coins (i.e., include a slot that has been cut to insert coins).
- ⇒ Piggy banks must be created or decorated by the youth contestant.
- ⇒ Plastic or ceramic piggy banks may be used, but must be personally decorated.

Age	Sponsor	Location
Preschool-2nd Grade	Farmers National Bank	136 West Main St.
3rd Grade-4th Grade	Citizens National Bank	149 West Main St.
5th Grade-6th Grade	Peoples Bank of Lebanon	107 West Main St.
7th Grade-8th Grade	US Bank	131 West Main St.
9th Grade-12th Grade	Community Trust Bank	521 West Main St.

Check the operating hours of the sponsor’s location

Decorating Ideas:

- ◆ Use a juice bottle, milk carton, coffee can, or shoe box
- ◆ Or, make or repurpose something around your house
- ◆ Paint on polka dots, hearts, stripes, flowers, etc.
- ◆ Create an abstract design, an animal, or use a theme
- ◆ Paste on magazine cut-outs or use decoupage
- ◆ Use stickers, 4-H clovers, or foam embellishments
- ◆ Glue on lace, ribbon, rope, trim, fabric, or felt
- ◆ Examples include a baby pig, farmer pig, athletic pig, or anything you can imagine. *BE CREATIVE!*



For more information contact:
Elizabeth Creed
Marion Co. Extension Office
(270)-692-2421
415 Fairgrounds Road
Lebanon, KY 40033