

Master Cattleman

Lawrence County
Extension Office

The program consists of ten 3- to 4-hour sessions on aspects of beef production. The objective is to enhance the profitability of Kentucky's beef operations and the quality of our beef cattle.

Cost: \$30 which includes meals and educational materials.

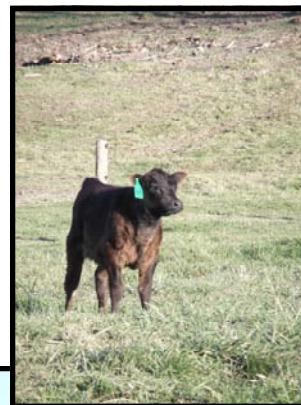
All meetings will begin at 6pm at the Lawrence County Extension Office.

249 Industrial park Road
Louisa, Kentucky 41230

Phone: 606-673-9495
Fax: 606-673-9498
E-mail: julia.hinkle@uky.edu

SCHEDULE:

January 24	Facilities Management
February 7	Management
February 21	Forages
March 6	Nutrition
March 20	Genetics
April 3	Reproduction
April 17	Herd Health
May 1	Environment
May 15	End Product
May 29	Marketing



COOPERATIVE
EXTENSION
SERVICE

UK
UNIVERSITY OF
KENTUCKY
College of Agriculture