



# September 2010

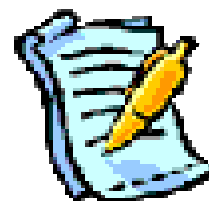
Cooperative Extension Service  
Grayson County  
123 Commerce Drive  
Leitchfield, KY 42754  
(270) 259-3492  
Fax: (270) 259-0291  
graysonext.org

## **NEW & RE-ENROLLMENT**

It's that time again, August means time for everyone to fill out that enrollment sheet **AGAIN**. The 2010-2011 program year began August 1. Fill out the enclosed enrollment form and return to the Extension Office before October 29 to remain on the mailing list and be entered into a drawing, three names will be selected at random

for a new 4-H t-shirt!

Invite your friends to participate!



## **4-H Awards Ceremony**

4-Her's from the past year **and** newly enrolled are invited to the 4-H Awards Ceremony

**When:** Thursday, October 21

**Time:** 6:30

**Where:** Large meeting room of the Extension Office

This will be the time for handing out awards to participants in events from the 2009-2010 program year.

There will be cake and drinks to follow;  
no meal will be served this year.

# CLUB NEWS

## Livestock Club



Jason Yeager, 4-H alum, will be leading the Livestock Club. We are planning to have Livestock Judging, both Junior and Senior teams. Contact the Extension Office to sign up 259-3492.

## Dairy Project Club

Unlike the Livestock Club, the Dairy Club is specialized in Dairy Livestock judging and showing. For anyone that is interested in the Dairy Club, please call the Extension Office at 259-3492 to put your name on a list for the club leader.

## Sewing Club

Sewing Club will be meeting on September 10 & 24. New members may start coming to the meetings. Contact Barbara Stiles for more information at 242-4694.



## Teen Club

ALL meetings will be after school at the Extension Office on the **3rd MONDAY** every month. If you are in High School, but don't attend GCHS, YOU CAN join the Teen Club!! September meeting will be September 20 at 3:30 in the Medium Meeting room of the Extension Office. Please contact Rebecca or Jan Powell if you have any questions, 259-4533.

## Adventure Club

October 9, we will travel to Franklin, KY to the drive-in movies, please call the Extension Office by October 7 to let us know if you are going and for an update on plans. Movies and show times are not announced until the week leading up to the weekend.



To file a complaint of civil rights discrimination, you should contact the USDA Director, Office of Civil Rights, Room 326-W, Whitten Bldg., 14<sup>th</sup> & Independence Ave., S.W., Washington, D.C. 20250-9410 or call (202) 720-5964. A complaint must be filed no later than 180 days from the date of the alleged discrimination.

## Boots & Spurs

Meetings for September are the 14th and the 28th at 6:00 PM at the Swift's. For additional info please contact Candy Swift at 259-4726.

**REMEMBER for all riding meetings**  
**- NO BOOTS, NO HELMETS,**  
**NO RIDING-NO**  
**EXCEPTIONS!!!! YOU**  
**MUST HAVE A HELMET ON**  
**WHEN YOU GET ON YOUR**  
**HORSE!**



## Shooting Sports

Disciplines will be held as follows:

Trap- Mondays 5:00 at Leitchfield Sportsman's Club located off of HWY 737

Archery- Tuesdays 5:00 at Ag Park

Rifle- Thursdays 5:00 Ag Park

Black Powder- Thursday 5:00 Ag Park

Contact Wanda Holland 287-3111 for more information.



## **GOOD LUCK at the State Shoot:**

Weston Boone, Zach Downs  
Seth Frank, Wyatt Higbee, Catie Higbee,  
Thomas Holland, Michael Horn,  
Zach Lashley, Isaac Logsdon, Aaron Means,  
Shane Means, Luke Decker, Cole Decker

*Kindra Ewing*  
Grayson County Extension Agent for  
4-H Youth Development



Head



Heart



Hands



Health

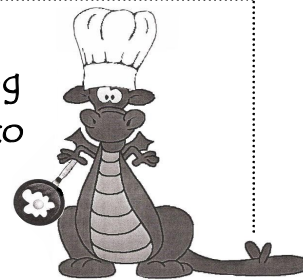


Disabilities accommodated with prior notification.

# Frying Dragons

## Frying Dragons Advanced:

First Club meeting will be September 17 from 4-6 in the small meeting room of the Extension Office. Each meeting there will be a fee of \$5 to help with the cost of supplies. Contact Michelle Robinson (589-7613) for more information.




## Frying Dragons Beginners:

First club meeting will be September 21 from 4-6 in the small meeting room of the Extension Office. Each meeting will have a fee of \$5 to help with the cost of supplies. Stacey Shain will be the leader for this group. You can reach her at 589-4818.

If you haven't signed up for the club yet there's still time, you need to call the Extension Office 259-3492 to do so before the 17th or 21st.

**You can now find Grayson County 4-H on Facebook.  
Leave feedback, ask questions, get info!  
Add us to your groups today!**

Leader:	Lisa Garrison-Ragsdale
<b>CloverBuds</b>	Open to 5-8 year olds
<b>4-H CLOVERBUDS HAVE Fun</b>	WHERE: The ROCK at Leitchfield United Methodist Church
	September there will be <b>NO</b> meeting. Starting in October the meetings will change from Thursday nights to Monday nights.
	If you have questions or concerns, call Lisa Garrison-Ragsdale at 270-589-7481 or email her at <a href="mailto:celtictribe13@gmail.com">celtictribe13@gmail.com</a>

## Future Dates to Remember

- September 20– Points booklets due
- September 22– Honeyfest 5K
- October 21– Awards Ceremony for 2009-2010
- December 4– Hometown Christmas Run
- December 20– Christmas Crafts





## Monthly Photo Contest

4-H will have a monthly photo contest based on a monthly theme. The winner will be published in the next months newsletter. Photos may be of people, inanimate objects, animals, places, etc.



### SEPTEMBER Photo Contest Theme:

**“Are you ready for some Football?”:due September 20**

Photos may be dropped off or mailed to Grayson County Extension Office or emailed to [Kindra.ewing@uky.edu](mailto:Kindra.ewing@uky.edu) (subject line should read 4-H monthly photo contest)

**\*\*FYI\*\***

You do NOT have to be in the Photography Club to enter in the monthly photo contest, this is open to all enrolled 4-H members who would like to participate.

### August winner:

Theme–  
Bookworm

Allison Means



## Grayson County 4-H 5K Series

September 22– Honeyfest 5K

December 4– Hometown Christmas Run



**There are shirts left over from prior runs on sale for \$5 at the Extension Office. Stop by if you're interested!**

**For more information call 259-3492**

**Registration forms can be found at [www.graysonext.org](http://www.graysonext.org)**

### Photography Club

**The September meeting is Monday the 13th at 4:00 in the medium meeting room of the Extension Office.**

**Bring your state fair entries and we can discuss your pictures. If you are interested in joining the club please call the Extension Office to sign-up. 259-3492.**





# Zambia Pen-Pal

Grayson County 4-H has a pen-pal!! Tabatha Gregory is a Grayson County High School Alum in the US Peace Corp. Her current location is NDake, Zambia. She co-teaches in the school in her village and helps where she is needed. She has been drawing maps for the children and will paint with them and teach an art class.

As you can imagine, being in a small village, there are not stores near-by (no Wal-Mart around the corner).

**Our 4-H Program will have an on going project through the year and will be in communication with Tabatha in her village. We will be doing supply drives throughout the year to send to her and the children.**

**Paints, paint brushes, crayons, markers, scissors, flashcards, building blocks, anything for preschoolers or school age children will be sent.**

**Please bring your items (clean) to the Extension 4-H Office. If your family or 4-H club/group would like to write a letter or send a picture please include it!**

Tabatha will send letters, and updates about what she is doing.

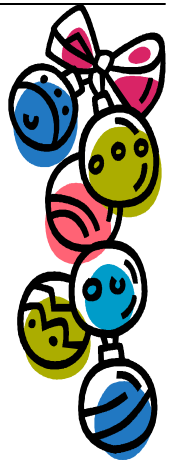
---

## Christmas Crafts

December 20

9:00 A.M. until 11:30 A.M.

This year we will be making origami ornaments and gifts with the instruction from Stacey Shain and Gwen Thompson. Cost for the session is \$2 per youth. Please call the Extension Office to sign-up! Don't forget crafts you make through the year can be entered in the fair at the end of the year!



---

4-H Teen Club will be hosting a weenie roast  
November 6 at 4:30 PM at the Ag/Rec Park  
**EVERYONE** is invited to the event!

Come out and join the group for a fun filled evening.

Hot dogs and s'mores will be on the menu.

Cornhole and other games will be available for play.



The 4-H Council will once again be selling Schermer Pecans. Orders will be taken at the Extension Office and *must be pre-paid*. Shipping and arrival dates TBA.

Varieties available are:

Fancy Mammoth Halves: \$7.50/16 oz. bag  
Fancy Extra Large Pieces: \$7.50/16 oz. bag  
Medium Pieces: \$7.50/16 oz. bag

Chocolate Covered Pecans: \$7.00/12 oz. bag  
Cinnamon Glazed Pecans: \$7.00/12 oz. bag  
Chocolate Pecan Clusters: \$7.00/12 oz. bag

### Christmas Card Drawing Contest

Put your artistic skills to the test in the 3rd annual Christmas Card Contest presented by the Grayson County Extension Office.

The winning card design will be printed as our office Christmas card.

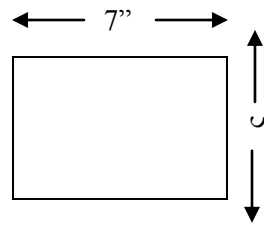
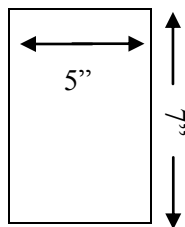
**Rules are simple:**

Designs must be entered in a 5"x7" or 7"x5" format.

You only need to provide the outside card design. A greeting from the office will be put inside. The winners name will appear on the back of the card.

**Artwork should be done in marker.**

Entries must be received by Friday November 5, 2010 to be considered for the contest. The winner will receive a 4-H t-shirt and all participants will receive a small prize for participation.



### POINTS RECORD BOOKS

Due by September 20 to the Extension Office

1st, 2nd, and 3rd Place high points for Junior

4-Her and Senior 4-Her category will be

presented at the Awards Banquet on October 21.



Presenting an opportunity to compete on a national level for poster and photography projects.

National Junior Horticulture Association has annual competitions with unlimited number of entries from each state. If you would like to participate, read ALL of the contest rules you would like to enter in.

**Entries must be turned into the Extension Office by September 9, NO EXCEPTIONS!!!**

From here they will be sent to the association. GOOD LUCK!!

## Poster Contest

To stimulate and interest children in the environment and the role horticulture plays in their lives.

### Who Can Participate

Age divisions of participants:

- 5 to 7 years old
- 8 to 10 years old
- 11 to 14 years old

### Contest Rules

Drawing must be on standard 8 ½ x 11 in. paper.

Only one entry per participant (no limit on the number of entries from any state)

The artist's name, age (as of Dec. 31 of the current year), date of birth, address, and the current year's theme should be placed on the back of the entry.

The drawing must be an original work based on the current year's theme.

Each entry must submit a self-addressed stamped envelope. If submitting an entire class, club or group, submit a self-addressed 9 ½ x 12 ½ in. envelope with \$3.00 in postage along with entries. Because of the popularity of this contest and the lack on the entry fee, entries lacking proper postage will not be acknowledged. Results will be mailed.

Entries become the property of the National Junior Horticulture Association and will not be returned. NJHA reserves the right to use any and all entries for publicity purposes.

Failure to comply with any of the contest rules will result in disqualification.

### Awards

First, second and third will be awarded in each division.

First place winners will receive a \$25.00 cash award and a gardening book,

Second place winners receive \$15.00 and third place winners receive \$10.00.

Each entrant will receive a packet of seeds and a participation ribbon.

**2010 THEME:**  
**My Healthy Harvest**

## Digital Imagery Project

To stimulate an interest in the use of digital imaging in horticulture.

### Who Can Participate

8 – 22 years old, individuals only. Age divisions are: 8 – 14 and 15 – 22 years old (as of Dec. 31 of current year). All award winners in any class are eligible to enter in any class the following year. Best of Show winner is also eligible to enter in a class the following year.

### Project Classes

- Single Unedited** -- B & W or color, maximum size = 12 x 14 inches, including matting/mounting. Picture comes straight from the camera without a modification.
- Single Slightly Edited** -- B & W or color, maximum size = 12 x 14 inches, including matting/mounting. Image has been somewhat digitally edited or enhanced. Modifications may include: cropping, sharpening or blurring, brightness or contrast changes, or the addition of text to the image. Thumbnail of the original image shall accompany the exhibit. Thumbnail must be minimum of 2 x 2 inches. **Participants must describe editing technique(s) used on entry page.**
- Single Heavily Edited** -- B & W or color, maximum size = 12 x 14 inches, including matting/mounting. Image has been radically edited or enhanced. Modifications may include: addition to or the removal of parts of the image, changes in the color scheme of the image, the use of filters or effects; or animation using digital images, etc. Thumbnail of the original image shall accompany exhibit. Thumbnail must be a minimum of 2 x 2 inches. **Participants must describe editing techniques(s) on entry page.**
- Sequence of Four** -- B & W or color digital images that tell a visual story without the use of words. All four photos should be mounted on one board/mat not to exceed 16 x 16 inches or 9 x 25 inches. If edited images are used, thumbnails of the image shall accompany the exhibit. Participants must describe editing techniques(s) used on entry page.

- E. **Horticulture Collection** – B & W or color, consisting of 6 photographs. All 6 photos should be mounted on one board/mat not to exceed 16 x 20 inches. If edited images are used, thumbnails of the image shall accompany the exhibit. Participants must describe editing technique(s) used on entry page.

Each entry must:

1. Have been taken with a digital camera.
2. Have been taken by the participant within 12 months before it is entered.
3. Include an entry form **COMPLETED BY THE EXHIBITOR**, and 4 x 6 inches or enlarged and mounted photograph(s) suitable for display. An entry form follows the project descriptions. If the exhibit is unable to complete the form without assistance, this should be documented and noted by the assisting individual.
4. All entries must be accompanied by a PC compatible CD containing the unedited image and edited image if applicable.
5. On back of mounting, image must be labeled with class, title, exhibitor's name, age, and state.
6. All exhibits should be titled with a caption to assist the judges/viewers in interpreting the image. Title may be on entry or just listed on entry form.

#### NOTES:

- Participants are limited to one entry per class.
- Individuals are strongly encouraged to submit works that best showcase their digital imaging skills.
- Photos should be matted and mounted only, and not be in a frame. Photos in a frame will not be accepted or judged.
- If participants do not complete the correct entry form for the Digital Imaging division, they will be automatically disqualified.
- Plagiarism: Images determined to be reproduced from another source by judges will be disqualified from competition.
- Submitted entries become the property of NJHA and **will not be returned to exhibitor**. Entries may be used for publicity purposes.



To stimulate an interest in the use of film photography in horticulture.

#### Who Can Participate

8 – 22 years old, individuals only. Age divisions are: 8 – 14 and 15 – 22 years old (as of Dec. 31 of current year). All award winners in any class are eligible to enter in any class the following year. Best of Show winner is also eligible to enter in a class the following year.

#### Project Classes

- A. **Single Black and White** – maximum size = 12 x 14 inches, including matting/mounting
- B. **Single Color** – maximum size = 12 x 14 inches, including matting/mounting
- C. **Sequence of Four** – B & W or color photographs that tell a visual story chronologically, without the use of words. All four photos should be mounted on one board/mat not to exceed 16 x 16 inches or 9 x 25 inches.
- D. **Horticulture Collection (B&W or color)**, consisting of 6 photographs. All 6 photos should be mounted on one board/mat not to exceed 16 x 20 inches.

Each entry must:

1. Have been taken with a still film camera.
2. Have been taken by the participant within 12 months before it is entered.
3. Be a natural photograph, meaning no altering of the photograph or negative. The photo may be stage, but images cannot be added, subtracted, or changed by any means including, but not limited to airbrushing, painting, erasing, or digital enhancement. Cropping of total photo area (but not of individual images) is allowed, and must be specified on the entry form.
4. All entries must be accompanied by a PC compatible CD containing the negative image (this can be done at your local photo store).
5. Includes an entry form **COMPLETED BY THE EXHIBITOR**, and 4 x 6 inches or enlarged and mounted photograph(s) suitable for display. An entry form follows the project descriptions. If the exhibit is unable to complete the form without assistance, this should be documented and noted by the assisting individual.

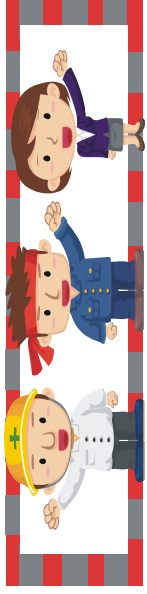
#### Special Notes

- Participants are limited to one entry per class.
- Photos should be matted and mounted only, and not be in a frame. Photos in a frame will not be accepted or judged.

**Submitted entries become the property of NJHA and will not be returned to exhibitor. Entries may be used for publicity purposes.**



# September 2010



Sun	Mon	Tue	Wed	Thu	Fri	Sat
		<div style="border: 3px double black; padding: 5px;"> <p>If anyone has any information or dates they would like to have in the October Newsletter, please phone Kindra Ewing at 270-259-3492 or e-mail at <a href="mailto:kindra.ewing@uky.edu">kindra.ewing@uky.edu</a>.</p> </div>	1	2	3	4
5	6 ♦ LABOR DAY	7	8	9	10 ♦ Sewing	11
12	13 ♦ Photography Club	14 ♦ Boots & Spurs	15	16	17 ♦ Frying Dragons Advanced 4-6	18
19	20 ♦ Teen Club 3:30 ♦ 4-H Council 5:00 ♦ Points booklets due	21 ♦ Frying Dragons Beginners 4-6	22 ♦ Honeyfest 5K	23	24 ♦ St Paul Sewing	25 Shooting Sports State
26 Shooting Sports State	27 ♦ Adventure Club 4:30	28 ♦ Boots & Spurs	29 ♦ TLA	30		Trap- Mondays 5 Archery- Tues 5 Rifle- Thurs 5 Black Powder- Thurs 5

RETURN SERVICE REQUESTED

**“You are fully  
responsible for  
everything you are,  
everything you have and  
everything you  
become.”  
-Brian Tracy**



## HAPPY BIRTHDAY TO OUR SEPTEMBER BIRTHDAYS!!!

<b>Chloe Wilder</b>	<b>9/1</b>
<b>Jacob VanMeter</b>	<b>9/1</b>
<b>Kristen Tilford</b>	<b>9/6</b>
<b>Seamus Ragsdale</b>	<b>9/8</b>
<b>Sam Barrett</b>	<b>9/9</b>
<b>Natalie Hutchinson</b>	<b>9/9</b>
<b>Jacob Clark</b>	<b>9/10</b>
<b>Kelsey Lyons</b>	<b>9/10</b>
<b>Kenzie Renfrow</b>	<b>9/12</b>
<b>Madison Hensel</b>	<b>9/22</b>
<b>Mikale Smith</b>	<b>9/21</b>
<b>Emma Wilder</b>	<b>9/22</b>
<b>Catie Higbee</b>	<b>9/27</b>
<b>Kayle Westphal</b>	<b>9/28</b>