

Of Cows & Plows



December 2008/January 2009

Mary Ann Hockensmith
Named Master Conservationist

UK Master Grazer

Program

**Anderson, Fayette, Franklin, Jessamine,
Mercer & Woodford County CES**

Livestock producers are first and foremost grass managers. Learn the plant and animal considerations associated with rotational grazing. Hands on implementation of a grazing program using temporary water and fencing plus concepts of how to layout a grazing system. Two evenings in the classroom, two on farm (demo farm to be determined). Applicable to cattle, horses, sheep, goats, etc.

4 Sessions

January 29th 5:30-9:30: **Plant Factors** – Kenny Burdine & Dr. Ray Smith. Woodford Co CES

February 9th 5:30-9:30: **Animal Factors** –Dr. Jeff Lehmkuhler & Dr. Phillips. Jessamine Co CES

TBA: **Demo Farm Field Day** - Kevin Laurent, Gallagher Fence, Dr. J.D. Green, Sid Brantly (NRCS)

TBA: **Grazing Farm Layout**

\$25 covers meals & materials

Call the Franklin County Extension Office
at 502 695-9035 to enroll.



Mary Ann Hockensmith with her granddaughter Kristen Conway at her side. Joined by Curtis Kirk, Division of Conservation, on the left and Tom Karsner, Franklin County Conservation District on the right.

Holiday Office Schedule



The Extension Office will be closed from December 24th to January 5th.

Winter Schools

Starting February 5th, 7-9:00. Topics include: Finishing & Processing Livestock, Pond Management, etc...

Kentucky Fruit and Vegetable Conference and Trade Show

January 5-6th

Embassy Suites Hotel, Lexington, KY.

New location, more room, more information! If you are a producer or aspire to be, you can't afford to miss this great local opportunity!

For details contact John Strang 859-257-5685 or jstrang@uky.edu or visit:

<http://www.uky.edu/Ag/HLA/kvgaprogramjan08.pdf>

KY Cattlemen's Association Convention and Trade Show

January 8-10

KY Cattlemen's Association Convention & Trade Show will take place in Lexington at the Hyatt Hotel & Lexington Convention Center. For more information contact the KCA at (859) 278-0899 or <http://www.kycattle.org/convention.cfm>



Cattlemen members Mona & Kerry Redding, Sherman & Gail Peyton, Roger & Lisa Perkins, Mary Ann Hockensmith and Deborah Conway at the Alamo

DISCRIMINATION COMPLAINT PROCEDURE

Any person who believes they have been discriminated against in any Cooperative Extension sponsored program or activity may file a complaint with the Secretary of Agriculture by writing to:

USDA, Director
Office of Civil Rights
Room 326-W, Whitten Bldg.
14th & Independence Ave SW
Washington, DC 20250-9410

A complaint must be filed no later than 180 days from the date of the alleged discrimination.

FCCA Bulk Mineral Order

Call the office by January 16th with your order. Delivery should be the 20th if weather cooperates. Plan to meet the truck at **noon** to make loading easier. Non-members can join FCCA for \$25.00.

UK recommends feeding High Magnesium when you start feeding hay. **Prices are not exact!**

Formulations

1. UK Cow/calf Basic
50lb bag +/- \$18.83
2. UK Beef Stocker w/ Monensin*
50lb bag +/- \$24.48
3. UK Beef IRM w/ High-Magnesium
50lb bag +/- \$23.80
4. Basic w/ High-Mag & Monensin*
50lb bag +/- \$22.85
5. Sheep Mineral Mix (low copper)
50lb bag +/- \$22.30
6. White Salt (for limit feeding)
50lb bag +/- \$ 3.80

*Toxic to horses, ponies, etc

Numbers 1-3 are UK Beef IRM recommendations and bagged by Kentucky Nutritional Services (KNS) of Lawrenceburg. Goat and horse mixes also available, call for prices.

Consider feeding # 2 to help increase feed efficiency and stretch limited hay reserves.

These mixes are bagged by Kentucky Nutritional Services (KNS) of Lawrenceburg. Goat and horse mixes also available, call for prices.

<<<< Calf Puller >>>>

Hopefully something you'll never need but if you do, the Extension Office has one to loan.



Kerry Redding and Roger Perkins trying to get some service in Judge Roy Bean's bar in Langtry Texas.

MID-SOUTH STOCKER CONFERENCE

February 24-25, 2009
Lake Barkley Lodge, Cadiz, KY

TUESDAY – Feb. 24 – Mid-South Stocker Conference Tour

11:30 AM BUS TOUR DEPARTS FROM BARKLEY LODGE (lunch will be provided)

- Stop 1. Scott Jolly's Stocker Operation, Cadiz, KY
- Stop 2. Fox Creek Cattle Co./Sorrell Farms, Hopkinsville, KY
- Stop 3. King Livestock Co., Hopkinsville, KY
- Stop 4 Tim Cato's Stocker Operation, Hopkinsville

6:00 PM Reception and Trade Show – Barkley Lodge

7:00 PM Dinner (Flat-iron Steak)

Lodging – Lake Barkley Lodge (call 1-800-325-1708 for reservations at room rate of \$44.95)

WEDNESDAY – Feb. 25 – Mid-South Stocker Conference Program and Trade Show

7:00 AM Trade Show with “country ham and biscuits”

8:55 AM Welcome – Dr. Roy Burris, UK

9:00 AM Value of Veterinary Service to Stocker Operations – Dr. Dee Griffin, MARC, Clay Center, NE

9:45 AM Survival and Sustainability of the Stocker Industry – Dr. Walt Prevalt, Auburn University

10:30 AM Break/Trade Show

11:00 AM Producer Panel – Dr. Jeff Lehmkuhler, UK
Dick Ryan, Lodi, Wisconsin
Leamon Bratton, Clarksville, Tennessee

11:45 AM Lunch/Trade Show

1:00 PM Market Outlook – Michael Murphy, Cattle-Fax

1:45 PM Implications of Phosphorus in Feeds and Fertilizer - Dr. Jeff Lehmkuhler, UK

2:30 PM Current Status of COOL - Nate Jaeger, NCBA

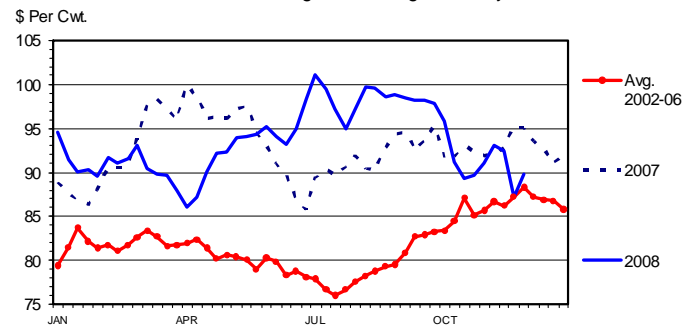
3:00 PM Adjourn

The preregistration fee for the conference (includes tour/reception meals, proceedings and access to the trade show) is \$95 per person. You may register online www.midsouthstocker.org or complete the following registration form.

Bring your significant other and spend a couple of days catching up on the beef industry and enjoying beautiful Lake Barkley. Call if you have any questions – Roy Burris 270-365-7541, Ext. 208, or Jeff Lehmkuhler 859-257-2853.

SLAUGHTER STEER PRICES

5 Market Weighted Average, Weekly



Keenan Bishop

Keenan Bishop
County Extension Agent for Agriculture and Natural Resources



The Heifer Sale Committee met December 2nd to review this year's sale and discuss plans for 2009. The 2009 sale will be Friday October 23rd at 6:00 at the Owenton Producers Stockyard. Changes for next year's sale include the following:

- All heifers MUST be calthood vaccinated for brucellosis.
- All heifers MUST test negative for BVD-PI.

For details contact the Franklin, Henry, Grant or Shelby County Offices or visit <http://www.capitalclassicheifersale.com/>

PRICING HAY?

CONSIDER PLANT NUTRIENT VALUE

There are so many variables involved in establishing a fair price for hay that it can sometimes seem overwhelming. One way of establishing a fair "baseline level" price for hay is to consider only the value of the nutrients removed in the crop. For example, a ton (dry matter basis) of typical forage removes about 12 to 15 pounds of phosphate (P₂O₅) and about 50 to 60 pounds of potash (K₂O). If the crop is mostly legumes (alfalfa, clover, or trefoil) that have been properly inoculated at planting and the soil pH is appropriate for the species, you don't need to worry about nitrogen, but legumes will generally require periodic liming to stay productive, and (except for trefoil) generally require reestablishment every few years. Many grassy stands can stay productive for many years with minimal lime additions, but each ton of dry matter harvested will also require 30 to 50 pounds of nitrogen per acre.

The value of the nutrients in the crop can be established without argument. They are definitely being removed from the land, and they are definitely being imported onto the farm that receives the hay— someone is losing them, and someone is gaining them. If we consider the value of these nutrients at the upper end of

today's prices, here's an example of what the cost of replacing them would be for a grassy stand:

Value of minerals in hay/haylage

Nutrient	Fert cost/t	Nutrient Content	Nutrient cost/lb
Nitrogen	\$ 1,200	82%	\$ 0.73
Potash	\$ 850	60%	\$ 0.71
Phosphorus	\$ 1,200	46%	\$ 1.30

Nutrient	Hay/straw content (% DM)		Hay/straw value	
	AVG	Low	AVG	Low
Nitrogen	3.0	1.5	\$ 41.90	\$ 21.95
Potash	2.6	1.0	\$ 36.83	\$ 14.17
Phosphorus	0.35	0.20	\$ 9.13	\$ 5.22
Secondary & micronutrients			\$ 6.00	\$ 4.00
Total			\$ 93.86	\$ 45.34

UK Equine Initiative unveils new Web site

LEXINGTON, Ky. (Sept. 24, 2008) The University of Kentucky's Equine Initiative unveiled a new Web site this month. The updated website launch coincides with the start of the fall semester and reflects the tremendous progress that's been made in equine programs since the Equine Initiative was announced in the spring of 2005.

The site, <http://www.ca.uky.edu/equine>, features updated information about UK's equine programs, including course information about its new undergraduate major and information about facilities currently under construction or in the planning process on its research farm. Additionally, site visitors can find information about UK equine faculty, current equine research, youth and adult outreach programs and student horse clubs and teams. The updated site also includes the latest equine news and announcements from UK, a monthly student newsletter and an updated calendar of events. Visitors will also find a central place to view documents about nutrition, pasture and forage information, pest control and general horse health.

The Equine Initiative, an overarching framework for all things equine at UK, is a cross-departmental and cross-disciplinary approach within the College of Agriculture resulting in enhancements to existing equine programs and the formation of new equine areas of emphasis.

As part of the Equine Initiative, UK has created a new equine-based undergraduate curriculum, enhanced and created equine research programs, expanded and created outreach programs to address equine issues of interest and established new partnerships with other equine organizations and universities.

The mission of the Equine Initiative is to discover, share and apply new knowledge that will enhance the health, performance and management of horses commensurate with the signature status of Kentucky's equine industry.

Return Service Requested

NAILE WINNERS!



Matt Craig is holding Willis Farm's Saler cow, Nicole, while 10 year old daughter Madeline holds her calf. Willis Farms won Grand Champion Cow/Calf Pair at the 2008 NAILE in Louisville this November