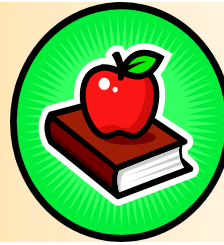


Back to School Issue

4 - H NEWSLETTER



Cooperative Extension Service
Franklin County
101 Lakeview Drive
Frankfort, KY 40601
(502)695-9035
Fax: (502)695-9309

4-H is a **community** of **young people**
across **America** who are learning
leadership, citizenship and
life skills.

What do kids do in 4-H?

Its up to you. You can go to camp, learn to shop wisely, give a demonstration, grow vegetables, hatch an egg, chat on a computer, make bread, shadow an adult at work, choose to eat healthy foods, give a speech, cure a ham, or conquer an obstacle course. You can perform in a skit, make a birdhouse, start a business, shear sheep, take pictures, learn about electricity, judge soils, bar-beque chicken, or drive a tractor. You can decorate a room, ride in a bike rodeo, be part of an international exchange, learn to sew, raise an animal, or protect the environment. And there's more! In 4-H, you will be working with other young people toward common goals and, if you wish, teaching younger kids. In short, you can build your 4-H activities around your own talents and interests.

How can you be involved in 4-H?

There are several ways you can be in 4-H, but the most fun way is probably through a 4-H club. All it takes to start a 4-H club is a couple of adults willing to work with a group of interested kids. Clubs meet in public places like schools, libraries, community centers, and even barns. You can also be involved in 4-H as part of the curriculum at school or through camp, special interest groups, and after-school child care programs. If you like to work by yourself, you can even do a self-study project at home with family members.

How do you enroll in Franklin County 4-H?

Come learn and have fun with us! All 4-H members must complete and enrollment form to participate in 4-H. This information gives us valuable information we need to keep you informed about upcoming 4-H Events. Regardless if you are a current member, **YOU MUST FILL OUT A NEW ENROLLMENT FORM EACH YEAR.** We would like all enrollment forms completed by November 1st so that we might serve you better. Feel free to complete the enrollment form enclosed in this newsletter and return it to us. By being an official member, you will receive monthly newsletters and special invitations for 4-H events. All official members will also be the first to receive a 4-H camp application in the mail!! Please see the 2008-2009 4-H Enrollment form on page 4. We look forward to an exciting year ahead.





Dates to Remember

- October 1– Shooting Sports at 6:30
 - October 3– Dog Club at 6:00
 - October 9–Livestock Club at 6:00
 - October 10–Dog Club at 6:00
 - October 17–Dog Club at 6:00
 - October 24–Dog Club at 6:00
 - October 31– Dog Club at 6:00
 - November 15-18th Teen Issues Conference
- * All meetings are held at the Franklin County Extension Office unless otherwise noted

As a part of 4-H, we pledge our **Head, Hands, Heart, and Health** to better our communities. This year we will be offering \$25.00 to the 4-H Club that exhibits the most community service and citizenship. What is citizenship and community service? It is an act of giving back to the community, doing good deeds and sharing with those in need. Remember, someone needs your help today! Don't waste any time! Be sure and organize a citizenship project that your club can participate in. Be sure and notify Mrs. Hudnall or Mr. Hearn of all your club's good deeds.



More Than You Ever
Imagined!

As a junior 4-H member you are eligible to participate in a variety of activities and projects. The projects that you participate in can be done in a group or individually. Some of the things you might do are:

- Livestock
- Woodworking
- Vegetables
- Clothing/Sewing
- Leadership
- Photography
- Health
- Speeches/Demonstrations
- Small Animals
- And many, many more!



There are also a ton of activities you can take part in through the 4-H program. You might participate in:

- 4-H Camp
- Livestock Judging Team
- Fashion Revue/Modeling
- Kentucky 4-H Teen Summit (7th & 8th Grade Only)
- 4-H Capitol Experience
- Skill-A-Thons
- County Fair/State Fair
- And many, many more!

If you can think of it, chances are there's a 4-H club for it!



4-H Horse Club

If you like horses, you will love the Franklin County 4-H Horse Club. The Franklin County Horse Club meets monthly at the Franklin County Extension Office. The Franklin County 4-H Horse Club consists of various activities at the county, district and state activities throughout the year such as the District 4-H Horse Judging Contest, 4-H Horse Shows and Horsemanship Camps. Other educational opportunities, including leader training, are held each year in the Kentucky 4-H Horse Program. 4-H Horse Program web site at www.uky.edu/ag/4horse.

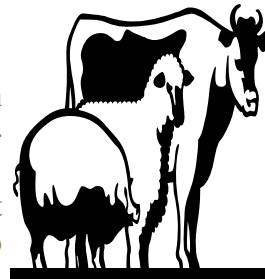
If you are interested in horses and you will enjoy this club! For more information call Jennifer Hudnall at 695-9035.



Ways to get involved in 4-H

4-H Livestock Club

The Franklin County 4-H Program is pleased to offer once again the 4-H Livestock Club. This club is for all youth ages 9-19 that are interested in showing Cattle, Swine, Sheep or Goats in the 2008 4-H year. Anyone planning on showing an animal in a 4-H sanctioned show must be an enrolled member of 4-H, and must complete six out of 4-H club training on livestock. If you want to show livestock in the fair this year, please contact John Hearn at 502-695-9035 to sign up for the club. The next club meeting is October 9th at 6:00 at the Cooperative Extension Service Office.



4 - H DOG CLUB

THIS 4 H CLUB IS OPEN TO YOUTHS AGE 9- 18 WHO ARE INTERESTED IN TRAINING A DOG AND LEARNING ABOUT VARIOUS ASPECTS OF DOG BEHAVIOR, CARE, HEALTH, CAREERS WITH DOGS, DOG SPORTS AND ACTIVITIES AND OTHER DOG-RELATED TOPICS. THROUGHOUT THE SESSIONS INFORMATION ABOUT DOG ORIGINS, ANATOMY, SENSES, PSYCHOLOGY, BREEDS, GROOMING , ETC WILL BE INCORPORATED. SOME SESSIONS WILL INCLUDE FIELD TRIPS, SERVICE WORK, AND SPECIAL PROJECTS. ALL DOGS IN THIS PROGRAM MUST BE SPAYED/ NEUTERED. THE DOG CLUB MEETS EVERY WEDNESDAY FROM 6 TO 7:00 P.M. AT THE FRANKLIN COUNTY EXTENSION OFFICE.



COME EAT PIZZA AND JOIN THE 4-H SHOOTING SPORTS CLUB! Franklin County is fortunate to have its own 4-H Shooting Sports Club. The First meeting of this season will be held October 1 at 6:00 p.m. at the Franklin County Extension Service Office. This meeting will introduce all new members to being a shooting sports member. In shooting sports you can compete in shooting disciplines such as 22 rifle/Air Rifle, 22 pistol/air pistol, shotgun, archery and hunter challenge. Be sure and come to this meeting and don't miss out. For more information, give us a call at 695-9035.

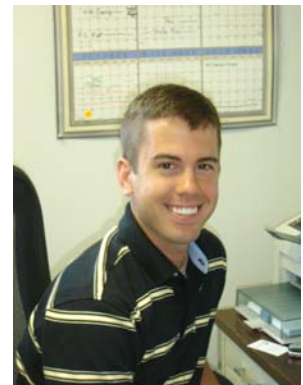
MEET OUR NEW 4-H AGENT!

The Franklin County Cooperative Extension Service is proud to introduce John Hearn as our newest extension agent for 4-H and Youth development. John brings a wealth of knowledge, a passion for youth and plenty of enthusiasm to the Franklin County 4-H Program. John will work with 4-H camp, school clubs, livestock club, teen programming, cloverbuds, animal science curriculum , leadership curriculum, communications programming among many other 4-H programs

See you at the next 4-H event!

Jennifer Hudnall, CEA for 4-H and Youth Development

John Hearn, CEA for 4-H and Youth Development



COOPERATIVE
EXTENSION
SERVICE



UNIVERSITY OF KENTUCKY
College of Agriculture

Cooperative Extension Service

*Franklin County
101 Lakeview Drive
Frankfort, Ky 40601
(502)695-9035
Fax: (502)695-9309
J.hudnall@uky.edu*

NONPROFIT ORG
US POSTAGE PAID
Frankfort KY
PERMIT 10090

4-H NEWSLETTER





FRANKLIN COUNTY 4-H ENROLLMENT
2007-2008

Please check or fill in answer

1. STATUS (check one): New Member Returning Member

2. NAME: _____

3. ADDRESS: _____ CITY: _____ STATE: KY ZIP: _____

4. E-MAIL ADDRESS _____

5. BIRTH DAY: _____ 5. HOW OLD ARE YOU _____ ?

5. YOU ARE A (check one): Girl Boy 7. GRADE IN SCHOOL: _____

6. SCHOOL: _____

7. ETHNICITY (check one) Hispanic Non-Hispanic

8. RACE (: White Black Alaskan/Am Indian Hawaiian/Pac. Island Asian

9. RESIDENCE (check one): You Live:

- In Town
- Out of Town, but not on a Farm
- On a Farm

10. PARENT/GUARDIAN WITH WHOM YOU LIVE (address should be the same as yours):

NAME: _____

DAY PHONE: (_____) _____ - _____ WORK PHONE: (_____) _____ - _____

(THE ABOVE INFORMATION IS FOR FRANKLIN COUNTY 4-H USE ONLY)

11. What 4-H clubs would you like to enroll in?

- Livestock Dog Club Horse Club Teen Club Clover Buds
- Shooting Sports Club School Clubs Only Other _____

12. By completing this form, your child will be enrolled as a 4-H member. You will receive a monthly newsletter and a 4-H Summer camp application. By checking the box, you will receive special information regarding activities these specific projects and events:

- 4-H Camp Arts/Crafts Cooking Babysitting Entomology (insects) Electricity Forestry Health Summer Activities Speeches and Demonstrations Day Camps Variety Show County Fair Horticulture Country Hams Volunteering Wood Working Sewing Photography Bicycling Natural Resources Science Leadership Cattle (Cows) Horses Dairy Rabbits or Poultry Sheep Goats

Please mail this form to Franklin Co 4-H, 101 Lakeview Court Frankfort Ky 40601
School Club members and other club members can return this form to their teacher or club leader.
Thanks!!

