



2010 Theodore Klein Plant Award Winners

<http://www.ca.uky.edu/HLA/Dunwell/TkleinPA.html#2011>

In 1995 a plant award program to select and promote outstanding ornamental woody and perennial plants for Kentucky Landscapes was initiated. The plant awards are named to honor the late [Theodore Klein](#), [Yew Dell Nursery](#), Crestwood, KY and selected by The Kentucky Theodore Plant Award Committee, an independent committee, that is sponsored by: the [University of Kentucky Nursery/Landscape Program](#), [Yew Dell Gardens](#), the [Kentucky Nursery and Landscape Association](#), and the Kentucky Department of Agriculture "Kentucky Proud" program .

Plants are selected based on the following criteria. The plants nominated for consideration must be able to: be efficiently propagated and produced; be found established in Kentucky and at least two good examples of the plant be established within driving distance of a majority of the Kentucky population; and be pest resistant. Plants hybridized, selected, or introduced by Kentuckians will be given priority.

Here are the winners!



Cornus florida
'Appalachian Spring'

Cornus florida 'Appalachian Spring' – Appalachian Spring Dogwood

What Kentucky garden would be complete without at least one of our native flowering dogwoods? 'Appalachian Spring' is a new selection that was introduced as the most disease-resistant cultivar on the market today. Dirr says of it in his *Manual of Woody Landscape Plants* (2009) "The lone worthy *Discula* survivor collected in the Catoctin Mountains, Maryland; displayed high resistance, not immunity in screening studies;"

Classic white spring blooms, bright red fall fruit and red/orange fall foliage combine to make the perfect package. Plant in rich, moist soil in partial shade.

Pinus bungeana - Lacebark Pine

This exquisite Japanese species offers fine evergreen texture on an upright oval form to 20-30' tall. The usually multi-trunked plants offer stunning exfoliating bark of deep green, cream, copper and olive (right). This is an excellent specimen plant for full sun or partial shade in rich, moist soils. A truly incredible cultivar was selected from a planting at the Dawes Arboretum, Newark, Ohio and has been relabeled as 'Silver Ghost' (below) to describe its bright white bark that is visible

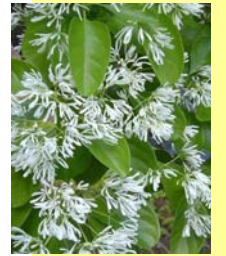


Pinus bungeana -
Lacebark Pine

from a long distance away.

Chionanthus retusus - Chinese Fringetree

Chionanthus retusus is a large shrub/small tree that is prized for its glossy green leaves, fragrant white flowers in late spring and its cultural adaptability. Plant in full sun or part shade in reasonably rich soil and it will provide years of enjoyment. It is amazing in flower in a given season you cannot see the foliage for all the flowers that form at the end of the new shoots. A seedling-grown southern-form (rounded leaves that Steve Foltz, Cincinnati Zoo & Botanic Garden Director of Horticulture, says is the better form) at the UKREC keeps its leaves until very late even after a hard freeze which turns them a shiny light brown that reflects as almost white from a distance. In the rainy summer of 2009 it was very prone to putting out long shoots



Chionanthus retusus -
Chinese Fringetree



Dryopteris x australis -
Dixie Wood Fern

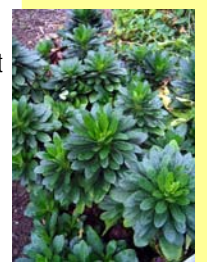
Dryopteris x australis – Dixie Wood Fern

It was selected because of its outstanding upright 3-4+ foot tall foliage that is considered tough and adaptable by those that grow it in Kentucky. It is a naturally-occurring hybrid between *D. celsa* (log fern) and *D. ludoviciana* (southern wood fern) that is found in native groups from Virginia to Louisiana. It has been observed as a dieback plant in zone 5, but is semi-evergreen south of that area. The lack of spore production limits propagation to division

and the tendency of wood ferns to naturalize a garden. Typical of many perennials this can be done in late summer-early autumn or early spring. While tolerant of dry conditions and full sun and considered a plant for the difficult dry shade climate under trees it does better in part to full shade with adequate moisture availability. A spectacular addition to any garden but very useful in the woodland garden.

Euphorbia amygdaloides var. *robbiae* – Robb's Spurge (Miss Robb's bonnet)

The perfect groundcover for dry shade, this plant produces a dense carpet of deep green, slightly glossy foliage that remains on the 12"-tall stems throughout the winter. This highly pest resistant species spreads slowly in dry conditions. Being rhizomatous in good soil and moderate moisture it is a rapid spreader. Small chartreuse spring flowers add a bright touch in spring. Be careful of the white milky sap in the stem tissue as it can cause skin and eye irritation. There is a cultivar 'Redbud' listed in catalogs that has red stems and apical growth.



Euphorbia amygdaloides var. *robbiae* - Robb's Spurge (Miss Robb's bonnet)

Emerald Ash Borer (EAB) Status and Outlook

By Lee Townsend

Over 5,500 purple traps were deployed during 2009 in an extensive survey program to detect EAB in Kentucky. Locations of traps that captured EAB, and infestations that were reported and confirmed (in Campbell, Fayette, Franklin, Greenup, Henry, Jefferson, Jessamine, Kenton, Oldham, Owen, and Shelby counties) are marked by green diamonds (Fig 1).

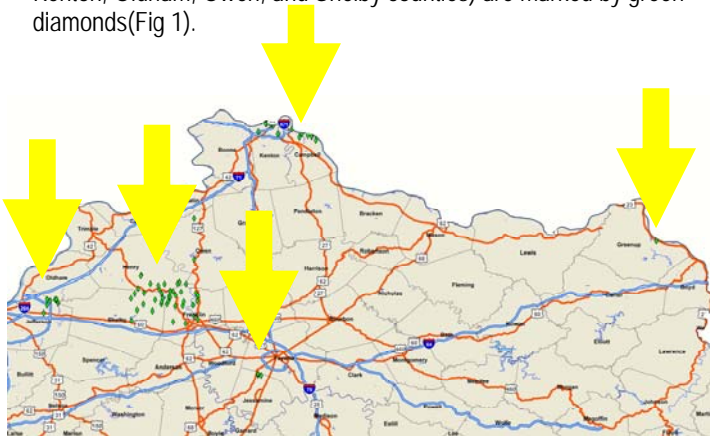


Figure 1. Green diamonds represent confirmed infestations or sites

Confirmation of EAB infestations in Kentucky prompts questions about what steps can / should be taken to protect ash trees from this devastating insect. While it is quite likely that undetected infestations exist, the survey results are very useful in developing response plans where the insect is known to occur. Assessing risk Ash trees (*Fraxinus* spp) in counties currently under the EAB quarantine are at greatest risk of infestation, as are trees outside the quarantined counties but within 10 to 15 miles of confirmed infestations. The quarantine includes a roughly triangular area from Louisville to Lexington to Covington (see <http://pest.ca.uky.edu/EXT/EAB/welcome.html> for details). Residents in these areas should check their property for ash and identify high value trees, and those that would pose a significant danger to property or safety if killed by borers, and plan a course of action. It would be good to make a simple map with the location of each tree, its circumference in inches at 4.5' above ground level, and a note on its general appearance and



health. The DBH (outside bark diameter at breast height) can be calculated by dividing the circumference by 3.14. This is useful because treatment costs are based on tree circumference or DBH. A picture of the tree taken after it has leafed out can be used as a reference to watch for later signs of

Purple traps placed in Ash trees to capture EAB adults

crown decline or die-back. Watching and waiting is a viable strategy if you are in the quarantine area but more than 15 miles from confirmed activity. Keep up with the latest information on EAB spread thru information from your local Cooperative Extension office or the Kentucky EAB page. Research has shown that trees with 40% or less canopy death from EAB will respond to insecticide treatment. This supports the "wait and see" tactic. Treatment options Ash trees can be treated with an insecticide to protect them from borer infestation (Table 1). Products applied to the soil are taken up by the roots and moved throughout the tree in the sap. Soil applications may not provide adequate protection for trees > 15" DBH. Trunk-injected insecticides are delivered thru small holes drilled to just beneath the outer bark. Trunk injection should be considered for large trees (> 15" DBH). The systemic bark spray insecticide is applied to the lower 5 to 6 feet of the trunk. According to the most current research data, treatments using imidacloprid or dinotefuran must be applied annually; emamectin benzoate provides at least 2 years of protection.



Emerald Ash Borer (EAB)

Table 1. Some insecticide options for professionals and homeowners for controlling EAB:

Active Ingredient	Brand Name	Application	Recommended Timing
Imidacloprid	Merit, Xylect	Soil injection or drench	Mid-to-late Spring
Emamectin benzoate, imidacloprid	Tree-age, Imicide, others	Trunk injection	Early May to mid-June
Dinotefuran	Safari	Systemic bark spray	Early May to mid-June
Imidacloprid*	Bayer Tree & Shrub Insect Control, Bonide Tree & Shrub, etc.	Soil drench	Late Spring

* Homeowner formulation.



Planting Woody Plants in Compacted Soils

Rick Durham, Consumer Horticulture Extension Specialist, University of Kentucky

Many homeowners today are discouraged when it comes to their landscapes because many of the trees and shrubs they plant fail to thrive. If poor watering is not to blame, the issue may be compacted soil. Today more than ever, construction practices lead to severely compacted soils around new homesites. The use of heavy equipment is the main culprit. Machinery traffic over soil reduces its porosity, or open pore space between soil particles. This open space is important to plant health because water and air enter and move through the soil primarily through pores. When these pores collapse due to compaction, the soil becomes poorly drained and air can no longer circulate through the soil. Imagine if you were a plant root in such an environment.

There would be little water to satisfy your thirst and no air to breathe. Yes, plant roots need air, especially oxygen, to carry out the basic biochemical processes of life.



What can be done about compacted soils? One recommendation is called double digging or extra digging. If you are planting into compacted soils, it is a good idea to work the soil around the hole, not just dig a hole and insert the tree. How big an area needs to be worked? That depends on the size of the tree and degree of soil compaction.

A minimum effort would be to dig a hole at least twice the diameter of the tree's root system and then work an additional area of soil that extends several feet around the hole. The hole should be dug deep enough to insert the plant's root system without twisting or breaking roots. Remember that the plant should be growing at approximately the same depth after planting as it was when growing in the nursery or container. This can be determined from a change in coloration on the trunk at soil level. The area around the hole should be worked to a depth of 8 to 12 inches using a shovel or tined instrument such as a pitchfork. This will reduce compaction and promote healthy root growth by opening up the soil to allow water and air movement. It is usually unnecessary to amend the soil with material such as peat moss or pine bark. Rather, use the same soil that was removed from the hole to back fill when planting the tree or shrub.

Finally, don't forget to keep the newly planted tree or shrub well watered for the next few years, and add two to three inches of mulch to the surface of the planting hole (not letting it touch the bark of the tree; place in a bowl shape) to reduce water loss and control weeds. Staking trees is usually not necessary.

For more information, log on to: <http://pubs.ext.vt.edu/426/426->



Are Heirloom Vegetables in Your Future?

Rick Durham, Consumer Horticulture Extension Specialist, University of Kentucky

Have you visited your local farmers' market lately? If so, you've probably encountered some heirloom vegetables. Or if you're into vegetable gardening yourself, you've probably noticed more and more heirloom vegetable varieties being marketed by seed companies. One popular TV home and garden personality even has her own line of heirloom vegetables that are marketed through a local discount department store. So why all the hype?

Heirloom varieties are usually older cultivars that were developed in the early 1900's or before. Many current heirlooms were popular in the World War II victory gardens, others were introduced from overseas by immigrants over the past few hundred years. Still others have their origin in Native American culture. One thing that sets heirlooms apart from modern cultivars is that heirlooms are not hybrids. Rather they are called open pollinated, meaning that they are allowed to cross hybridize with one another and they usually come true-to-type in the next generation. Unusual seedlings that arise during the next generation are eliminated, unless they look promising themselves. If the unusual seedling shows merit, it may be propagated, further evaluated, and designated as a new variety.

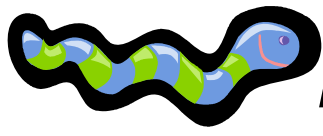
Home and commercial gardeners and seed companies often partner to maintain heirloom varieties. One of the largest and most extensive partnership of this sort is the Seed Savers Exchange of Decorah Iowa. Seed Savers has over 8,000 members who grow and distribute heirloom varieties of vegetables, fruits, and grains. A similar but separate organization, the Flower and Herb Exchange promotes the preservation and propagation of heirloom herbs and flower varieties. Many commercial seed companies also maintain and market heirloom varieties.

So what makes heirloom vegetables special? Many people believe such varieties have superior flavor since they have been selected for taste and tenderness over many generations. This is in contrast to many modern cultivars that have been selected for ease of shipping, firmness, appearance, and country-wide adaptation to climate. When heirloom varieties are maintained by a particular family or group of people, they tend to become adapted to local climate and soil conditions and may even become more pest resistant. Some people just enjoy being involved in the process of regenerating plant varieties year after year.

Here are some of the more popular heirloom varieties that are fairly easy to find in the seed trade. Golden Bantam sweet corn, Brandywine tomato, Lemon cucumber, Kentucky Wonder pole bean, Golden Hubbard squash, and Moon and Stars watermelon, to name a few. Some of these varieties may be more susceptible to disease than modern hybrids, but with a little extra care, they will reward with flavorful produce for the table and pantry. So try some heirloom vegetables for a bit of history and a lot of flavor.



Moon and Stars Watermelon



Kids Corner

Raise your Own Worms!



<http://www.ca.uky.edu/enri/pubs/enri312.pdf>

Worm composting is a suitable alternative for many people who do not have the space or volume of waste to support a larger composting system. Worm bins may be used in apartments, offices, and homes; and can be placed either indoors or outdoors. Worm composting may be done in a classroom setting, and introduces students to waste decomposition. The worms stay in the bin and eat household scraps, and the bin gives off little odor.

Making a Plastic Worm Composter

A worm composter can be easily and inexpensively made using a plastic container. Surface area is important for good decomposition of your food scraps. Therefore, a wide and shallow container is better than a tall, narrow container. Your container should not be greater than 12- 16 inches in depth, but should be at least 6 inches deep. A lid is not necessary, but may be used if you prefer. Lids can be anything from a simple sheet of light-weight plastic to a hinged or snap-on top. If you do not have a suitable container, these types of bins are readily available in retail outlets.

To set up your composter:

1. Wash your container thoroughly with warm, soapy water.
2. Drill ventilation holes in the sides and bottom of the container. The holes should not be more than ½ inch in diameter. If you are using a snap-on or hinged lid, you may drill holes in the lid to provide extra ventilation and cut down on odors.
3. Add your bedding, worms and food scraps.

Placing Your Bin

The bin can be placed anywhere where the temperature remains between 50°F and 80°F. Garages, basements and kitchens are all possibilities. Select a location that will be convenient for you to add your wastes. Placing a plastic sheet under the bin is wise, especially if used indoors.

Preparing Your Bedding

Various types of materials are suitable as bedding. These include peat moss, shredded newspaper, shredded cardboard, brown leaves and machine shredded computer paper. Moisten your bedding by placing one-half of the material in a large bucket and then adding some water. You want it like a moist, wrung-out sponge, not dripping. Approximately two cups of garden soil can be added. The soil assists the worms in digesting materials. Add the remaining bedding material, moistened. Add bedding to a depth between 4 and 8 inches, depending upon the size of your container.

Adding Your Worms

Red worms are the appropriate type to use in composting. One pound of red worms can eat 3 ½ pounds of food waste per week. Before purchasing worms, estimate the amount of food scraps you plan to compost. Keep in mind that meat waste and bones are not suitable for composting. Fruit and vegetable scraps, bread scraps, egg shells, coffee grounds (with filters), and tea bags are suitable for your worm bin. Red worms are better suited for indoor composting and should be purchased through a horticultural or garden supply company. To add your worms, place on top of the bedding. Leave the lid off the bin for a short time, so that the worms will work their way down through the bedding.

Adding Your Waste

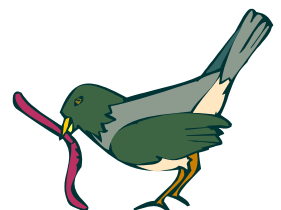
To add food waste, dig a small hole in the bedding and add scraps. Cover the hole with bedding. Waste may also be placed in a shallow trench or sprinkled across the top. Waste does not have to be added on a daily basis, but should be added at least every 2 to 3 days. If fruit flies become a problem, you may add fresh bedding to the top. If odor becomes a problem, check for adequate ventilation. In addition, odor and/or fruit flies may be an indication that too much waste has been added to the system. To solve this problem, remove a portion of the bedding and waste, and replace with fresh bedding. Allow 1 to 2 days before adding waste again. Do not add any inorganic or potentially hazardous materials, such as chemicals, glass, metal or plastic.

Maintaining Your Worm Bin

Adequate moisture is important to keep the worms active, healthy, and contained. Check the moisture level regularly. Bedding should be damp, but not soggy. If bedding is too wet, add additional dry bedding. If bedding is dry, sprinkle with water. Every 3 to 6 months, move the compost to one side of the bin, and add new bedding to the empty half. Begin adding wastes to the new bedding only. The worms will move to the new bedding within one month. The "old" bedding (now finished compost) can be harvested for use. New bedding should be added in its place.

Sources of Worms by Mail

Flowerfield Enterprises, Kalamazoo, MI (616)327-0108
Gardner's Supply Co., Burlington, VT (800)955-3370
Seventh Generation, Colchester, VT (800)456-1177
Worm's Way, Bloomington, IN (800)274-9676





Earthworm Fact Sheet

Lumbricus terrestris (lum-BREE-kus ter-RES-tris)

Earthworms improve the soil in many ways: they loosen, mix, and move dirt, as well as enrich it. Worms in an average acre of land may process about 7 tons, or a half-inch of new, rich soil a year. If the soil is very rich and there are lots of worms, they may move up to 42 tons of soil in a year. The narrow tunnels that worms make let water and air enter the earth to reach the plant roots. Earthworm castings are spongy and soak up water, helping the soil stay moist. An average worm may create 8 pounds (about 3-4 kg) of castings every year. Earthworms are detritivores, meaning they eat dead or decaying plant and animal matter. Worms are natural recyclers, turning waste material into a new, useful form.

Earthworms have been on earth as long as 120 million years and live all over the world. Earthworms live wherever they find enough food, soil moisture, and comfortable temperatures. The only places worms do not live are deserts (too dry), and areas where the ground is frozen all or most of the time (too cold).

Earthworms have a wide variety of sizes, from less than an inch (2.5 cm) to 3 feet long (a meter) such those found in the Pacific Northwest. The biggest worms in the world live in Australia - 11 feet (3.4 m) long and an inch-thick! Scientists believe there may be anywhere from 2,500 to 8,000 different species of earthworm.

An earthworm has no lungs; instead, it absorbs oxygen through its skin. The skin must be moist to absorb oxygen, and the earthworm's mucus helps keep it that way. There is enough oxygen in the air that is trapped between particles of soil and in the



Kids Can Recycle Too!

earthworm's burrow to keep the worm alive. Worms can also survive underwater for a time because they can absorb oxygen from water as well as air. After a rainstorm, you may see dead worms on sidewalks and driveways. Rainwater may not have enough oxygen causing the worm to drown or come to the surface to breathe. Heavy rains may also wash earthworms out of their burrows. Once on bare pavement, worms may dry out or die from exposure to sunlight.

During dry times, earthworms tunnel deeper into the soil to find moisture. When the weather gets extremely hot or cold, the worm curls up into a little ball and keeps moist with a mucous sac.

All earthworms are hermaphrodites, both male and female, but they cannot produce offspring alone. When earthworms mate, they exchange sperm cells. About 30 segments from the front, worms have a thick band called the clitellum. After mating, the clitellum secretes a special ring of mucus. The worm backs out of the ring, depositing egg and sperm cells as it goes. Then the ring closes to form a cocoon. Look for these cocoons in the topsoil, they are the size of a rice grain and the shape of a lemon. After two to three months - depending on weather conditions and the kind of worm species - new worms wriggle out.

Not only does "the early bird get the worm", but mammals such as badgers, foxes, skunks, hedgehogs, and moles eat earthworms. Frogs, salamanders, lizards, and snakes eat earthworms, too. Worms can live to be over ten years old, but usually only in captivity, when protected from predators.

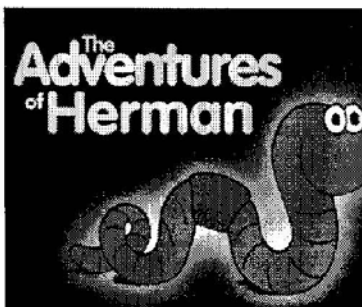
Despite the rumors, one earthworm sliced in half does not make two new worms. Amazingly, most kinds of earthworms can grow back chopped tails, and even a few species can grow back their front ends. The closer the break is to the middle, the slimmer the chance that all the cutoff rings will reappear. However, a bit shorter is a lot better than being someone else's meal.

Adapted from:

Ross, Michael Elsohn. 1996. Wormology. Minneapolis: Carolrhoda Books, Inc.

Other Resources:

Kladivko, Eileen J. 1993. "Earthworms and Crop Management" *Purdue University Cooperative Extension Service Agronomy Guide*. West Lafayette, IN: Purdue University and U.S. Department of Agriculture.



"The Adventures of Herman: The Autobiography of Squirmin' Herman the Worm" 1999.

<http://www.urbanext.uiuc.edu/worms/index.html>

Urban Programs Resource Network:

University of Illinois Extension.



UNIVERSITY OF ILLINOIS
EXTENSION

College of Agricultural, Consumer and Environmental Sciences



Calendar of Things To Do!

There are so many places to go and things to do in the spring and summer! Choose just one this month and get outdoors with your family and friends!

Salato Wildlife Education Center Events; Contact Kristy Stroud, Kristy.Stroud@ky.gov or 800-858-1549. For full calendar log on to: <http://fw.ky.gov/>

Wednesday, March 10; Brown Bag Lunch Series: noon - 1 p.m.; A Tale from John Muir; Dr. Richard Shore will bring the past alive during his interpretation of John Muir. Muir, the founder of the Sierra Club, was a writer, naturalist and conservationist who believed in the connection of our natural world to us. His legacy lives on through tales of exploration and preservation of our natural resources. Free!

Friday, March 19; 8 a.m. - 4:30 p.m. Project WILD & Project Growing Up WILD; This is great for educators, non-formal educators, scout and youth leaders or anyone with an interest in education about the environment. Project WILD is a highly acclaimed, award-winning curriculum. Project WILD offers KERA-compatible, interdisciplinary, hands-on activities emphasizing wildlife and the environment. Registration required. \$20, or \$30 for both (Wild or Growing Up Wild).

Arboretum Events; contact (859) 257-6955 or log on to <http://www.ca.uky.edu/arboretum/>

Other Events:

Saturday, March 20. Walk/Bike Frankfort - A walk and bicycle rodeo. Begins at 10:00 a.m. with the rodeo to follow. The route for the walk will be based on the Safe Routes to Schools Initiative, which looks at ways to encourage children to walk or ride their bikes to school. The bicycle rodeo is designed to teach children basic bicycle safety skills. What a great way to celebrate the first day of spring! For more information, please contact Walk/Bike Frankfort at walkbikefrankfort@gmail.com or Jason Delambre at jason.delambre@gmail.com or call Donna Hecker at 859-361-5967.

Saturday, March 27 -Woodland and Wildlife Workshop The workshop brings together forestry and wildlife expertise from Kentucky, Indiana, and Ohio; the workshop rotates among the three states on an annual basis—this year's workshop is being held in Cincinnati and next year will be hosted by Kentucky. This workshop is supported by UK Forestry Extension, Kentucky Division of Forestry and Kentucky Department of Fish and Wildlife Resources. Log on to <http://woodlandstewards.osu.edu/site/> for more information.

Tuesday, March 30, 5-6:30pm; Gardeners Toolbox- Vegetable Gardening 101. Never gardened but want to start? Learn all the basics of growing vegetables in the ground, raised beds and containers. Free! Call the Extension Office to pre-register.

Web Links

This month we will focus on local CSA websites that you can enjoy!

<http://www.kyagr.com/marketing/farmmarket/csa.htm> Ky Department of Ag listing for some CSAs across Kentucky.

<http://www.localharvest.org/csa/> Local Harvest- lists CSAs across the country. Enter your zip code and find the CSA nearest your location.

www.hazelfieldfarm.com Hazelfield Farm is a 160 acre diversified family farm located in Wheatley. Specializing in cut flowers, which are crafted into dried arrangements, sachets, bouquets and more.

<http://www.localharvest.org/csa/M24974> Cleary Hill Farm has several drop off points and days to fit busy schedules; first choice, seasonal produce going into our baskets! Find us on Facebook!

<http://www.localharvest.org/csa/M33963> Featherland Farm offers fresh produce that is ready to harvest each week. Additional items are made available for purchase via weekly email updates of in-season items. Find us on Facebook!

<http://www.triplefarm.org/csa.php> Triple J Farm is a four generation, family farm of 370 rolling acres located within Scott County. Our fruits and vegetables are grown with our own organic compost.

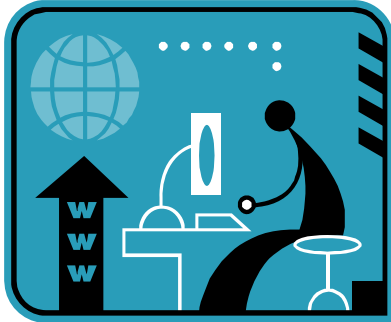
<http://www.elmwoodstockfarm.com/> Elmwood Stock Farm, offers organically grown, gourmet quality vegetables freshly harvested to ensure high flavor and nutritional benefit. Organic meat and eggs available!

Extension in Cyberspace!

Did you know that you can find all the great Extension information on the internet? Have you checked out the Franklin County Cooperative Extension website lately? Also find us on Facebook by searching Franklin County Cooperative Extension! And you can receive your Horticulture Hotline by email or by logging on to the Franklin County website.

We are working to keep the Franklin County Cooperative Extension website (<http://ces.ca.uky.edu/franklin/>) up to date with current classes, events, newsletters and breaking information just for you! The page was revamped several months ago and has a cleaner look and feel to it.

Across the top of the page are tabs that take you to each of the five program areas- 4H & Youth Development; Ag & Natural Resources; Community & Economic Development; Family & Consumer Sciences; and Horticulture. Also you will find tabs to UK Publications and Upcoming Events. The left side of our page features specific Extension information where you can find directions to the office; list of our staff and their emails; the local weather; and what Extension is all about. Links to our partners, newsletters, and some programs can be found on the right side of the page, using live links. To read the Horticulture Newsletter online, click here. <http://ces.ca.uky.edu/franklin/newsletters>



Check us out often! Please let us know how you like our sites, and be sure to talk back to us on FaceBook. We welcome your input!

If you would like to change your Horticulture Hotline Newsletter to the email version, please contact Wanda at the Office- phone 502-695-9035 or email

Wanda.Ellis@uky.edu 

Find us on FaceBook



Franklin County Cooperative
Extension

Home Hort Hints for March

March marks the time when most of us can resume steady work in the garden. The soil has thawed and will likely not freeze again as long as the weather doesn't turn extremely cold. Here are some activities to accomplish during the windy month. Don't overexert those underworked, winter muscles as you begin your spring gardening. Bend at the knees and lift with your legs, not your back.



- ◆ Start preparing the vegetable garden and flower beds as soon the soil is able to be worked. Test this by forming a ball of soil in your hand. If it crumbles apart rather than sticks together, it is dry enough to be worked.
- ◆ Plant cool season crops such as **onions, radishes, lettuce, and spinach as soon as you can work the soil.** Followed by beets, turnips, carrots, Swiss chard, and peas. Also, transplant broccoli, cabbage, and other cole crops to the garden now.
- ◆ Transplant trees and shrubs while they are still dormant. Also, make plans to purchase trees, shrubs, and perennials for later spring planting.
- ◆ Prune tree fruits and small fruits while they are still dormant. Remove damaged branches from trees and shrubs. Wait to prune spring flowering trees and shrubs until after they have flowered.
- ◆ Begin raking back mulch from perennials as warm weather returns. Mulch deeper than one to two inches may smother regrowth.
- ◆ Canna rhizomes that were overwintered indoors can be potted up in nursery containers or large boxes to get a jump-start on their growth and flowering this summer. Divide the rhizomes into pieces that each have 2-3 growing points or eyes, and plant them using a well-drained potting mix. Transplant to the garden when all danger of frost is past.
- ◆ As the foliage of spring-flowering bulbs begins to appear, apply a complete fertilizer to the surface of the soil. For a complete fertilizer like 10-10-10, an appropriate rate would be 1-2 pounds of a fertilizer per 100 square feet.
- ◆ Check lawnmowers and other power landscape and garden equipment to ensure they are in good working order. Arrange for repair and routine maintenance early to avoid the crowds later in the season.
- ◆ March is usually an excellent time to prune woody plants in the landscape. The best time for pruning most plants is just before growth begins in the spring. An exception is spring flowering plants that should be pruned just after flowering. 

RAIN OR SHINE FAMILY EVENT!



**Reforest Frankfort
& ARBOR DAY**

SATURDAY, APRIL 3, 2010

9:00 A.M. ~ 2:00 P.M.

**BOAT LAUNCH ON OLD LAWRENCEBURG ROAD
(NEAR E-W CONNECTOR & JULIAN CARROLL BRIDGE)**

SCHEDULE OF ACTIVITIES 4/3/10

- 9:00 - REGISTRATION, ORIENTATION & EXHIBITS OPEN**
- 9:30 - NOON - ARBOR DAY TREE GIVEAWAY**
- 9:30 - TREE PLANTING SESSIONS (EVERY HALF-HOUR) ***
- 10:00 - LIVE MUSIC BEGINS & RUNS THROUGHOUT THE DAY**
- 10:30 - WOODSY OWL APPEARANCE**
- 11:00 - OFFICIAL TREE PLANTING & PROGRAM**
 - ARBOR DAY POSTER CONTEST AWARD WINNERS**
 - BIG TREE IDENTIFICATION AWARD WINNERS**
- 11:30 - 2:00 - LIVE MUSIC, TREE PLANTING AND EXHIBITS CONTINUE**

FREE REFRESHMENTS!!!

*** Please bring a shovel for planting and wear gloves**

For more Information about REFOREST FRANKFORT 2010
ANDREW CAMMACK – 502-803-0764 – acammack@fewpb.net
REBECCA HALL – 502-352-2076 – rhall@frankfort.ky.gov

March brings SPRING! The mere thought of some beginning warmth and sunshine and growing plants excites me! Remember to not rush in to gardening too quickly in the early days of the month, lest we get a late freeze. Also wait a bit to work up your soil- be sure it is fairly dry and not frozen. Get your soil tests in *early!* The soil lab gets very, very busy in the spring and this will delay your results.

Let me know how your gardens grow! I welcome pictures and stories about YOUR gardening and planting experiences- whether they are in the ground, a raised bed, or a bucket. Also if you have a favorite gardening website to share, let me know that also. Email me or post a note or a photo on the Franklin County Cooperative Extension Facebook page!

Happy Gardening (it won't be long now!)! Kim



Kim Cowherd
CEA for Horticulture

COOPERATIVE
EXTENSION
SERVICE



Cooperative Extension Service

*University of Kentucky
Franklin County
101 Lakeview Court
Frankfort KY 40601*

NONPROFIT
US POSTAGE PAID
FRANKFORT KY
PERMIT 10090

RETURN SERVICE REQUESTED

**The foolish man seeks happiness in the distance,
the wise grows it under his feet.**

- James Oppenheim

The poetry of the earth is never dead.

- John Keats

Do the best that you can in the place where you are, and be kind.

- Scott Nearing

Nature is not a place to visit, it is home.

- Gary Snyder

Give me strength to walk the soft earth, a relative to all that is.

- Black Elk



Contact the Franklin County Extension Office at (502) 695-9035 if you would like to receive our newsletter via email
or email requests to gil.thurman@uky.edu or kim.cowherd@uky.edu

If you **DO NOT** want to receive this newsletter or your address is incorrect, please notify us immediately.