



April 2011 Hort Hotline



HORTICULTURE

Cooperative Extension Service

Franklin County
101 Lakeview Court
Frankfort KY 40601
(502) 695-9035
Fax: (502) 695-9309
www.ca.uky.edu/ces

CELEBRATE OUR EARTH! APRIL 22 IS EARTH DAY!

Managing Crabgrass in Lawns

<http://urbanext.illinois.edu/lawnchallenge/lesson6b.html>

Crabgrass and other annual grass weeds are common problems in home lawns that can be treated through both chemical and nonchemical methods. Proper lawn care practices to encourage a dense stand of vigorous grass is the best way to prevent weeds from invading. For example, **mowing height** can have a big impact; lawns mowed higher (over two inches) tend to have less problems with annual grasses such as crabgrass. Close-mowed lawns tend to open up, allowing weeds like crabgrass to invade. Light, frequent **watering** also favors crabgrass. Crabgrass often invades areas seeded in late spring because of bare soil, frequent watering, and the onset of hot weather, which is ideal for its growth.

Herbicides (weed killers) are also available to manage annual weeds. Preemergence herbicides prevent annual grass weeds such as crabgrass from emerging. **Timing of application** is important, as the weed killer should be applied to soil before the crabgrass emerges from the soil. Crabgrass will germinate when soil temperatures are greater than 55 to 60 degrees F. for 7-10 consecutive days, and continues until soils reach 95 degrees F. Other annual grasses germinate as the soils get warmer than 60 degrees.

(Continued on Page 8)

WHAT'S INSIDE THIS MONTH...

Home Hort Hints	2
Reforest Frankfort	2
It's Asparagus Time!!!	3
19th Annual Kentucky Herb Festival	3
Euonymus Scale	3
Kidz Corner—Making Mini-Hothouses	4
Calendar of Things to Do!	5
Eastern Tent Caterpillar	5
Mulching Trees and Shrubs	6
Avoid Black Knot of Flowering Plums	7
Cabbage Looper	9
Note From Kim	10
Weblinks	10
Boxelder Bug	10

The first Earth Day was in April 1970, and celebrated across the United States. People were becoming aware and concerned about the environment and the toll that we humans were making on our Earth. Millions of Americans gathered to hold festivals, clean up streams and parks, read proclamations, and raise awareness about environmental issues. Much of the basic legislation needed to protect the environment was enacted into law as a result of this awareness. The most important piece of environmental legislation in our history, the National Environmental Policy Act (NEPA) was signed into law on January 1, 1970. NEPA came about in response to the same public pressure which later produced Earth Day.

What can we do now, some 30 plus years since the first Earth Day celebrations? Change light bulbs to more energy efficient bulbs; plant trees; purchase and eat locally grown foods; walk more, drive less; use less pesticides and fertilizers on your lawn; turn off unnecessary lights and appliances in your home and work; use cloth/reusable shopping bags; recycle everything you can! These are just a few easy and simple measures we all can take to help our environment.



Links:

[Earth Days in the Bluegrass - Calendar of Events](#)
[Environmental Protection Agency ~ Earth Day](#)

Home Hort Hints

Rick Durham, Consumer Horticulture Extension Specialist, University of Kentucky



Daffodil care: Enjoy the daffodils and other spring bulbs that are bursting into bloom. Leave the foliage alone until it starts to yellow which usually happens in late May or June. After the foliage has yellowed, cut to ground level. If the foliage is removed too early

(for example, when the grass is mowed for the first time) there will be fewer blooms next year. This not only pertains to daffodils, but to other spring-flowering bulbs such as hyacinth, tulip, and crocus.

Successful transplanting: If you've bought flower or vegetable transplants to go into the yard or garden, be aware that weather conditions when you plant these may affect their success at becoming established. Before being planted, transplants should be hardened off by placing them for a few days in a sunny protected location. Reduce watering during hardening off, almost to the point the plants wilt. But apply a little water during the day as severe wilting occurs. Hardening off will make the plants tougher and more suited to growth in the yard or garden. Keep plants well watered after transplanting and remember to apply a layer of mulch to help conserve soil moisture and reduce weed growth.

Fruit sprays: The first few applications are the most important: If you have fruit trees in your home landscape, you must plan some sort of pest management strategy. Hopefully, your home orchard contains varieties with at least some natural pest resistance which may greatly reduce the number of sprays you must make to the trees. Good cultural management including proper pruning, watering, fertilization, and sanitation will also reduce the amount of sprays needed. However, there really must be some sort of spray program to achieve good quality fruit and reduce the amount of fallen rotten fruit and wasp and bees at the end of the season.

For your safety and to protect the environment, always apply chemicals according to label directions. For more information, contact the extension office and ask for ID-21, Disease and Insect Control Programs for Homegrown Fruit in Kentucky Including Organic Alternatives - <http://www.ca.uky.edu/agc/pubs/id/id21/id21.pdf>.

Houseplant care: Many people place houseplants outdoors during late spring and summer. This can be great for the plants since they will likely get better air circulation and light exposure than they experienced during the winter months indoors. This may also be an excellent time to repot your houseplants if they are becoming pot bound. Wait until the weather is consistently warm before moving plants outdoors. Most houseplants are of tropical origin and may be damaged by temperatures below 40-45 degrees. Do not immediately move houseplants into direct sun outdoors. Gradually increase the amount of light intensity by placing plants first under a covered patio or large shade tree and gradually moving them to higher light intensities. Allow them to acclimate for 7 to 10 days before moving to a new, sunnier location. Remember that as the light intensity is increased, most plants will require more water and will benefit from increased applications of fertilizer. Follow label directions when applying fertilizers.



RAIN OR SHINE FAMILY EVENT!

Reforest Frankfort & Arbor Day

SATURDAY, APRIL 2, 2011
9:00am - 2:00pm
Benson Creek Boat Ramp
Benson Valley Road

SCHEDULE OF ACTIVITIES

- 9:00 - REGISTRATION, ORIENTATION & EXHIBITS OPEN
- LIVE MUSIC BEGINS & RUNS THROUGHOUT THE DAY
- 9:30 - NOON - ARBOR DAY TREE GIVEAWAY
- 9:30 - TREE PLANTING SESSIONS BEGIN
- 10:30 - WOODSY OWL APPEARANCE
- 11:00 - OFFICIAL TREE PLANTING & PROGRAM
- ARBOR DAY POSTER CONTEST AWARD WINNERS
- BIG TREE IDENTIFICATION AWARD WINNERS
- 11:30 - 2:00 LIVE MUSIC, TREE PLANTING AND EXHIBITS CONTINUE

2012 TSHIRT LOGO CONTEST - VOTE FOR YOUR FAVORITE DESIGN

FREE REFRESHMENTS!!
Please bring a shovel and wear gloves and boots.
Please bring your own water bottle.

reforest frankfort
Design by Rodnick Young

For more information about REFOREST FRANKFORT 2011
ANDREW CARRICK - 502-502-0764 - acarrick@ca.uky.edu
REBECCA HALL - 502-352-2076 - rhall@ca.uky.edu



It's Asparagus Time!!!



Asian Asparagus Salad

- | | | |
|--|--|---------------------------------|
| 1 pound fresh asparagus | 2 teaspoons sugar or artificial sweetener | 2 teaspoons sesame seeds |
| 1½ tablespoons low sodium soy sauce | 1 tablespoon olive oil | |
- 1. Snap** off and discard the root ends of the asparagus.
 - 2. Wash** remaining stalks thoroughly.
 - 3. Slice** stalks into 1½ inch lengths on the diagonal.
 - 4. Blanch** asparagus for 1-3 minutes in boiling water, until bright green in color.
 - 5. Cool** immediately under cold water and drain.
 - 6. Combine** soy sauce, sugar, olive oil, and sesame seeds in a small glass bowl. **Mix** dressing until sugar is dissolved.
 - 7. In** a gallon zip-seal bag, add asparagus and dressing. **Turn** bag to coat asparagus with dressing and chill in the refrigerator for 15 minutes. **Turn** bag again and chill for an additional 15 minutes before serving.

Yield: 4, ½ cup servings.
Nutrition Analysis: 70 calories, 4.5 g fat, .5 g sat. fat, 0 mg cholesterol, 250 mg sodium, 7 g carbohydrate, 2 g fiber, 3 g protein.

Buying Kentucky Proud is easy. Look for the label at your grocery store, farmers' market, or roadside stand.



Kentucky Asparagus

SEASON: April through May.

NUTRITION FACTS: Asparagus is a good source of vitamin A and folate. One-half cup of fresh, steamed asparagus has 22 calories, 2 grams of protein, and 4 grams of carbohydrate.

SELECTION: Choose bright green stalks with tightly closed tips. The most tender stalks are apple green in color with purple-tinged tips.

STORAGE: Fresh asparagus will keep 1-2 weeks in the refrigerator. Refrigerate upright with cut ends in water or with cut ends wrapped in wet paper towels in a plastic bag.

PREPARATION: One pound of asparagus will yield 4 one-half cup servings, about 6 spears per serving. Wash asparagus thoroughly in cool, running water. Eat asparagus raw or lightly boil, steam, stir-fry, or grill. Overcooked asparagus will be mushy. Try seasoning it with herbs, butter, or Parmesan cheese.

ASPARGUS

Kentucky Proud Project
 County Extension Agents for Family and Consumer Sciences
 University of Kentucky, Nutrition and Food Science students
March 2011

Educational programs of Kentucky Cooperative Extension serve all people regardless of race, color, age, sex, religion, disability or national origin. For more information, contact your county's Extension agent for Family and Consumer Sciences or visit www.ca.uky.edu/fcs.



Source: www.fruitsandveggiematter.gov

This information and more on vegetable growing can be found in *Home Vegetable Gardening in Kentucky*. Contact the Extension Office if you need a printed version of this information. <http://www.ca.uky.edu/agc/pubs/id/id128/id128.pdf>

19th ANNUAL KENTUCKY HERB FESTIVAL FOR 2011

The 19th annual Kentucky Herb Festival sponsored by the Kentucky Herb Association is on Saturday, May 21st, 2011 from 9:00am - 4:00pm. The festival is held at Lakeview Park, Franklin County Fairgrounds just off US 460 in Frankfort, Kentucky. There is no charge for the festival but there is a nominal parking fee of \$3.00.

There will be vendors from all over the state selling a wide variety of herbal crafts, products, foods, and plants. The Mink Run Consort will entertain with musical offerings of traditional Celtic and American music.

At noon there will be an auction of garden and herbal items, the proceeds of which benefit future KHA festivals.

The herb of the year is Horseradish. Check out more information from the International Herb Association: <http://iherb.org/hoy2011.htm>

For more information, contact Sue Wash (502)535-6885 or log on to: <http://www.kyherb.com>.



Horseradish, *Armoracia rusticana*
 2011 Kentucky Herb Association
 Herb of the Year

Euonymus scale, *Unaspis enonyi* (Comstock)
 Diaprididae, HOMOPTERA
 Euonymus scale female armor is dark, oyster-shaped and 1/16 inch long. Mature males are tiny two-winged insects that emerge from their armor to mate with the females (Females do not leave the protective covering).



Making Mini-Hothouses

Here is something fun for you to do to get ready for gardening! You won't plant these outside until the middle of May. Here are is a link to more fun activities! <http://www.global-garden.com.au/gardenkids.htm>

Do you like tomatoes? They're great for making lots of foods kids like, such as pizza, salsa and tomato sauce. Tomato seeds need warmth and moisture to germinate. To get a head start, you can plant your tomato seeds in little mini hothouses in early spring and then transplant them into the garden when the weather is a bit warmer. Home grown tomatoes taste SO good!!

You will need: some 12cm (about 4 ½ inch) pots; the same number of 2 liter soft drink bottles; potting mix; tomato (or other vegetable or flower) seeds.



What to Do:

1. With an adult's help, using a pair of heavy duty or kitchen scissors cut the top off of the 2 liter bottle. Cut where the bottle begins to slope or curve.
2. Almost fill the pots with damp, bagged potting mix. (Use your gardening gloves when handling potting mix.) Do not use soil from your yard.
3. Plant a couple of seeds in each pot. Plant them about a quarter of an inch deep. The seed package should tell you how deeply to plant. Water gently and well.
4. Turn the bottom pieces of the soft-drink bottles upside down over the top of the pots. Your seeds and seedlings will now have their own little greenhouses.
5. Place the mini-greenhouses in a warm, brightly light area, but not in full sun. A brightly lit window sill is perfect. If the potting mix appears to be drying out, add water. You will need a saucer to catch the drips under the mini-greenhouse, but don't let the pots sit in water.
6. When the seedlings have developed two healthy leaves, remove the tops and place the pots outdoors (be sure the temperature is at least 65 degrees!), first in a shady area and gradually move them to a sunny spot.
7. Choose the healthiest seedling and very gently pull the other ones out and discard them. This will help your plant grow strong.
8. When the plants look sturdy enough, transplant them into the garden (or into bigger pots.)
9. You can use these mini-greenhouses with lots of other seeds too. Try flowers or other vegetables like peppers, eggplant, squash, pumpkins.





Calendar of Things To Do!

In and Around Frankfort

April 2—Reforest Frankfort/Arbor Day celebration/planting party will take place at the Benson Creek Boat Dock on Benson Valley Road. 9:00 a.m.—2:00 p.m. Please bring a shovel, gloves, boots and your own water bottle. For additional information contact Andrew Cammack 502-803-0764 acammack@fewpb.net or Rebecca Hall, 502-352-2076, rhall@frankfort.ky.gov.

April 17—Spring Birds & Buds Guided Walks @ 2:00 p.m. Join Frankfort Audubon members, guests and interested individuals in informative gentle walks around Buckley Sanctuary grounds and possibly just off-site. We'll view budding and blooming wildflowers while listening to and observing birds. This guided hike provided free of admission charge by Buckley Sanctuary

for local nature lovers to recruit support for this spectacular resource just upstream along the Kentucky River.

Frankfort Parks & Recreation – Cove Springs - “Dare to be an Outsider”

All programs begin at 10:00 a.m., Saturdays, unless otherwise noted. Programs will last approximately 1 1/2 –2 hours. Activity, craft, snacks included. For more information on programs at Cove Springs, contact Debbie at nanstheman@yahoo.com, 513-300-8500, or Parks Department at 502-875-8574

BONDING WITH YOUR BIKE—April 23, Folk Bike Recyclery, Broadway St. Downtown Frankfort.

LET’S REAP WHAT WE SOW—(Ever heard of the 3 sisters?) - May 21, Logan and 2nd Street at the Community Garden

Salato Wildlife Education Center—Frankfort

For additional information on events at the Salato Center, contact Kristy Stroud at (502) 564-7863 or go online at fw.ky.gov and click on “Upcoming Events” to search for activities.

BROWN BAG LUNCH SERIES: Restoration of the American Chestnut Tree—April 13, Noon-1:00 p.m. FREE, Limit: None. All ages are welcome. A member of the Kentucky Chapter of the American Chestnut Foundation will join us during this lunch presentation to discuss the future restoration efforts of this magnificent hardwood tree. The eastern deciduous forests were once home to many American chestnut trees, which served as important resources for the forested ecosystems. We will learn where the stands are growing today and what is being done to help their populations. No registration required.

SPRING BREAK—Go Wild at Salato for Spring Break. April 5-Wild About Raptors, April 6-Build a Bluebird Box, April 7-Castaway Kids, and April 8-Amazing Amphibians. For additional information check out the Salato Center at fw.ky.gov.

A Nature Hike for Kids -April 16, 10:00 a.m.—Noon. Cost \$5.00, Limit 15 participants. Ages 5 and up. Registration and prepayment are required. Getting outside and exploring the natural world is one of the best ways to get kids connected to wildlife. Join the Salato staff for a guided hike along our Habitrek Trail. We will explore for signs of wildlife, learn about native trees and use our nature journal to record our sightings. Be sure and wear appropriate shoes and bring water. The Habitrek Trail is not stroller accessible.

A Pond Prowl—April 20, 10:00 a.m.—Noon. Cost \$5.00, Limit 12 participants. Ages 8 and up. For additional information check out the Salato Center at fw.ky.gov.

Earth Day at Salato—April 22. Stop by the Salato Center to pick out a free native tree sapling! In celebration of Earth Day, we are giving away native sapling from the Kentucky Division of Forestry to the first 500 people. Families can choose from white pine, persimmon, flowering dogwood and black walnut.

A Wildflower Hike—April 23, 1:00 p.m.—4:00 p.m. Cost \$5.00, Limit 15 participants. Ages 13 and up. Take the time to enjoy a hike with the Salato staff as we show you the blooming beauties on the forest floor. KY is home to more than 2,000 wildflower species, which thrive in different geographic regions of our state. The hike will take place on the Pea Ridge Trail, so please wear appropriate shoes and bring water! This is a primitive trail rated moderately strenuous. Registration and pre-payment are required.

The Arboretum—Lexington

Lexington, Ky. Contact (859) 257-6955, <http://www.ca.uky.edu/arboretum/index.php> for more information.

"A Morning at The Arboretum with Louie Hillenmeyer." - Thurs. April 14, 10 a.m.—Cost: Free

Gardening guru Louie will offer tips and techniques for growing beautiful container gardens. Sponsors, ITN*Bluegrass*, a local affiliate of national nonprofit ITNAmerica, provides 24/7 automobile transportation to people 60+ and adults with visual impairment anywhere in Fayette County. Call Holly @ 859-252-8665 with questions or to register.

Riparian Zone Restoration—Tuesday, April 19, 10 a.m-12 p.m.—Cost: FREE

Riparian buffers offer a number of ecosystems benefits related to water quality, streambank stabilization, and habitat. Riparian buffers slow and capture runoff, which can improve water quality by trapping and filtering pollutants such as sediment, nutrients, and pesticides. We'll cover the main concepts behind the benefits of riparian buffers, removal of invasive plants, selection of native plants & planting/maintenance.

Composting at Home—Tuesday, April 19, 6 p.m.—Cost: FREE

LFUCG Waste Management has joined efforts with The Arboretum, presenting a workshop for any resident interested in learning how to manage a home composting system including: how to build or install one, how to maintain it, how they work, the items that can and can't be placed in a compost pile, and ways to use the end product. Participants will get a chance to win a green Kitchen Compost Bin, (Grubby) which is portable and perfect for short term storage of kitchen compost, must be pre-registered to receive it.

Plant a Wetland—Tuesday, April 26, 10 a.m.—Cost: Free

Join Arboretum staff for a hand-on workshop highlighting plants suitable for a wetland area. Instruction will be given in proper techniques for planting and you will have the opportunity to assist with planting the soon to be open Kentucky Children's Garden.



Eastern Tent Caterpillar,
Malacosoma americanum
Lasiocampidae

Mulching Trees and Shrubs

Erv Evans, Consumer Horticulturist, NC State University

Mulching trees and shrubs is a good method to reduce landscape maintenance and keep plants healthy. Mulch helps conserve moisture --- 10 to 25 percent reduction in soil moisture loss from evaporation. Mulches help keep the soil well aerated by reducing soil compaction that results when rain-drops hit the soil. They also reduce water runoff and soil erosion. Mulches prevent soil and possible fungi from splashing on the foliage ---- thus reducing the likelihood of soil-borne diseases. They help maintain a more uniform soil temperature (warmer in the winter and cooler in the summer) and promote the growth of soil microorganisms and earth worms.

Mulches eliminate mowing around trees and shrubs and provide a physical barrier that prevents damage from lawn mowers and weed trimmers. A 2- to 4-inch layer (after settling) is adequate to prevent most weed seeds from germinating. Mulch should be applied to a weed-free soil surface. Simply covering perennial weeds such as bermuda-grass or nutsedge will not prevent their growth.



The mulched area should include as much of the root zone as possible. For beds mulch the entire area. For individual plants, such as trees, the mulched area should extend at least 3 to 6 feet out from the base of the plant. It is advisable to pull the

mulch 1 to 2 inches from the base of plants to prevent bark decay.

Mulch can be applied any time of the year. However, the best time to mulch is late spring after the soil has warmed. Early spring application will delay soil warming and possibly plant growth. It is not

necessary to remove the mulch when you fertilize. Apply the fertilizer over the mulch --- nutrients will move with water to the roots below.

Organic mulches decompose with time, releasing small amounts of nutrients and organic matter to the soil. The layer of mulch should be renewed as needed to maintain a 2- to 4-inch depth. On previously mulched areas apply a 1-inch layer of new material. Yard waste, such as grass clippings, leaves, and small twigs can be used as mulch in moderation. The back side of the shrub border or natural area is an ideal place to dispose of small pruning clippings. Ideally, these materials should be shredded or composted before applying; however, small amounts can be applied to an existing mulch.

Other organic materials that are sometimes used as mulch include wheat straw, shredded newspaper, peanut hulls, wood chips, sawdust, and partially decomposed leaves.

Properly composted wood chips can be used as a long lasting mulch that weathers to a silver-gray color. Unfortunately, most wood chip material is sold as a fresh material rather than as a composted or aged material. The chips decompose slowly, but as they decompose, microorganisms use nutrients from the soil that might otherwise be available for plant growth.

Non-shredded leaves and grass clippings can form a thick mat that makes water penetration nearly impossible. If sawdust is used it should be well


Inches of Material	Organic Material Needed to Cover 100 Square Feet
6	2 cubic yard
4	3.5 cubic feet
3	1 cubic yard
2	18 cubic feet
1	9 cubic feet
1/2	4 cubic feet

aged, otherwise it will be difficult for water to move into the soil.

Some gardeners feel that if mulch is good the more they use the better; however, the mulch layer can become too deep. Excessive application of mulch can result in a situation in which roots are growing in the mulch and not in the soil. Over-mulched plants are easily damaged when herbicides and fertilizers are applied and during periods of drought stress. Mulching an area that is poorly drained can aggravate the condition.

An organic mulch creates a breeding grounds for insects and some fungi --- most are harmless to trees and shrubs but may seem troublesome to gardeners. Their role is to break down the organic matter, which releases nutrients. Slugs are the most likely harmful pest. An application of wood ashes or diatomaceous earth at the base of the plant should provide some slug control. An alternative is to use slug baits or pellets.

In some cases, mice and voles may tunnel under mulch and cause damage by chewing the plant bark. Pull the mulch back 6 inches from the stems. A circle of crushed stone about 6 inches wide or a cylinder of 1/4-inch hardware cloth around the trunk may also be helpful.

For more information log on to: <http://www.ces.ncsu.edu/depts/hort/consumer/factsheets/trees-new/text/mulching.html> or contact the Extension Office for printed material. 

AVOID BLACK KNOT OF FLOWERING PLUMS

By John Hartman

The most destructive disease of landscape *Prunus* species such as flowering plums and flowering cherries in Kentucky is black knot, caused by the fungus *Apiosporina morbosa*. Unlike leaf spots and blights which mar the beauty of the trees during any given season, black knot, by girdling the affected limbs, destroys the trees themselves, affect-

ing the landscape plant or nursery investment for many years. Perhaps most aggravating, this disease is sometimes introduced into the landscape in the fall of the year when homeowners don't recognize early black knot symptoms on trees already infected. Black knot occurs in throughout North America on more than 24 species of *Prunus*. Symptoms appear as elongated swellings or knots which may extend a foot or more along the limbs of infected trees. These black corky outgrowths predominate on small twigs and branches but may also be located on larger scaffold branches and on the trunk.

How trees become infected. In spring, black knot fungus ascospores are ejected from fruiting structures called perithecia embedded in the black knots on limbs of infected plums or wild cherries growing in landscapes or fencerows nearby. Spore release occurs during rainy periods and the spores are then moved by wind currents. A period of as little as 6 hours of free moisture at 70 F is required to cause infection. Longer wetting periods are required at lower temperatures. Infections occur almost entirely on the young green twigs, but they often remain undetected most of the first season. However, swellings are visible by fall and typical swollen knots are very obvious the following season, when they enlarge, split the bark, and turn hard and black. These galls begin producing new inoculum two years after infection.

Black knot management. Little is known about relative disease resistance of flowering *Prunus* species and cultivars. Plum cultivars vary in their susceptibility to black knot with Stanley, Bluefree, Damson, and Shropshire being most susceptible; and Fellenburg, Methley, Milton, Bradshaw, and Early Italian only a little less susceptible. Backyard fruit growers should use cultivars such as President (resistant), or Formosa, Shiro, or Santa Rosa (slightly susceptible) for best results where black knot is in nearby landscapes.

Sanitation is the primary defense against black knot of existing trees. Flowering plum trees should be pruned for black knot during the dormant season because the disease is easier to see then. All

Continued on Page 9

For Kentucky, late April to early May is the suggested time for applying a preemergence crabgrass herbicide. If the spring is very warm, consider late April. In cold, "late" springs, these materials could be put down well into May. Using forsythia blooming as a guide is not dependable. Many preemergence crabgrass herbicides are available in combination with lawn fertilizer, so choose a product with low Nitrogen (the first number in fertilizer, ex: 10-10-10. Spring fertilization is not recommended!). Preemergence herbicides include benefin, benefin/trifluralin, bensulide, dithiopyr, oxadiazon, pendimethalin, prodiamine, and siduron. Some herbicides may be reapplied for extended control; refer to the label for timing and rates.

One of the management problems associated with preemergence herbicides is seeding or overseeding practices. Except *siduron (Tupersan)*, preemergence annual grass weed killers will also damage germinating desirable grass seed. Oftentimes siduron is combined with starter fertilizer.


If crabgrass plants are appearing in lawns in mid to late summer, remember that they are annual plants and die as temperatures drop in fall. Postemergence crabgrass herbicides need to be applied when crabgrass plants are small; by mid-May, typically crabgrass is noticed too late for these to be effective. The suggested strategy to avoid crabgrass next season would be to improve the lawn through cultural practices and consider a preemergence herbicide in spring.

There are additional perennial grasses that are frequent weed problems. Quackgrass, a coarse species with thick underground stems (rhizomes) can

be a major problem in lawns. Nimblewill, a creeping warm season species, often appears as light colored patches in lawns.

One way to distinguish perennial grasses from annuals is the time of the year established plants are present. Perennials (other than nimblewill and Bermuda grass) will appear as established green grasses early in spring; whereas annual grasses like crabgrass don't appear until late spring or early summer. Likewise, most annuals die off quickly in fall, but perennials do not.

Removing these weed patches by hand is one control option. It's important to get all of the plant, as many have underground or above ground stems (rhizomes or stolons). These stems enable these species to spread quite readily, so if broken or cut, they regrow.

Selective chemical control is not an option with most perennial grass species. Unlike selective herbicides used on annual grasses (e.g., crabgrass), nonselective herbicides used to control perennial weed grasses may also damage the lawn species. For this reason, spraying over the lawn is not suggested unless the problem is severe enough that all grasses need to be killed and the lawn reestablished. **Using a nonselective herbicide**, such as *glyphosate* (the active ingredient in Roundup), patches of the undesirable species can be spot treated. After weeds and portions of lawn hit with spray die, reseed with desirable grass species. Treating in mid-August is generally thought of as the best timing (late July to early August to control nimblewill and Bermuda grass), as late August into early September is the most favorable time for reseeding. 

Undesirable Plants As Indicators of Lawn Problems

Plant	Potential Underlying Problem
Crabgrass	Mowing too short, watering too often
Ground Ivy (creeping Charlie)	Shade, poor drainage
Clovers	Low fertility
Knotweed	Soil compaction
Moss	Shade, poor drainage, poor fertility



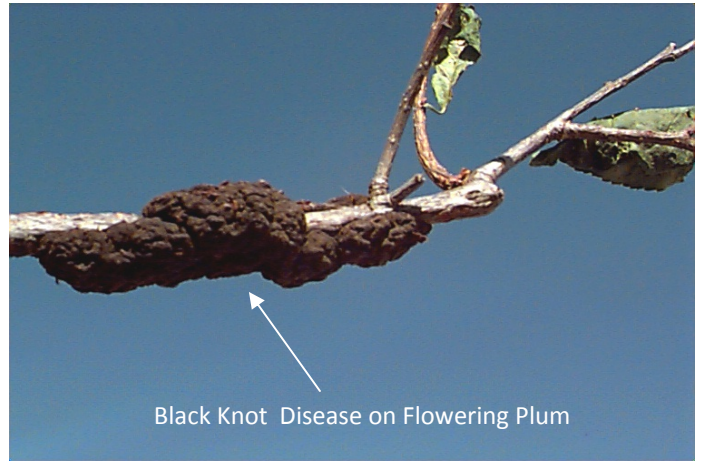
Crabgrass is a light green weedy grass that can appear in summer.



Common Knotweed (Polygonum arenastrum), an annual introduced from Europe.



Creeping charlie (Glechoma hederacea), also known as ground ivy and creeping jenny.



Black Knot Disease on Flowering Plum

infected branches and limbs should be cut 3-4 inches below any visible swelling, since the fungus spreads out beyond the knot itself. All black knot infections must be removed from landscape trees and from adjacent wild cherry trees. The knots must be collected and burned or buried because knots left in the trees or piled in the landscape can still liberate thousands of ascospores.

Fungicide sprays are effective in reducing the number of new black knot infections if the inoculum load is light. In landscapes with an established or anticipated black knot problem, fungicide programs ideally should start in early spring after bud break once rainy periods with temperatures above 55 F are expected. Applications need to continue while shoots are elongating according to weather and plant development until 2-3 weeks after bloom. The early sprays concentrated just at flower bud appearance are the most important. Clorothalonil (Daconil 2787) is probably the most effective fungicide for use against black knot, however, captan, and thiophanate-methyl (Cleary's 3336) also provide some protection. There are formulations of these three fungicides that are also labeled on plums. Fungicide applications are not effective if black knots have not been pruned out and destroyed.



Cabbage looper,
Trichoplusia ni (Hübner)
(Lepidoptera: Noctuidae).
Caterpillar (l) and Adult Moth (r)

COOPERATIVE
EXTENSION
SERVICE



Cooperative Extension Service

University of Kentucky
Franklin County
101 Lakeview Court
Frankfort KY 40601

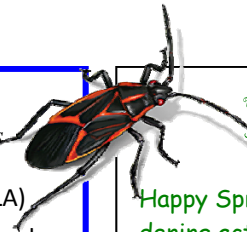
NONPROFIT
US POSTAGE PAID
FRANKFORT KY
PERMIT 10090

RETURN SERVICE REQUESTED



WEBLINKS

Boxelder Bug,
Boisea trivittatus



NOTE FROM KIM

<http://thekela.com/> Kentucky Environmental Literacy Alliance (KELA) is an alliance of Kentucky citizens, businesses, and organizations who support the goal of helping all Kentuckians become environmentally literate.

<http://www.kyagr.com/marketing/ageducation/education.htm> Ky Department of Ag- Agriculture education information.

<http://www.bgpride.org/> Bluegrass PRIDE- Personal Responsibility In a Desirable Environment Bluegrass PRIDE is a 501(c)3 organization dedicated to providing environmental resources and information to schools, community groups, local governments and citizens in Central Kentucky.

<http://www.childrenandnature.org/> The Children & Nature Network (C&NN) was created to encourage and support the people and organizations working nationally and internationally to reconnect children with nature.

<http://www.earthday.org/> The Earth Day Network- lots of info and education and action steps to promote Earth Day.

Happy Spring! Along with spring flowers and other gardening activities, we start to welcome all those insects back into our yard and gardens. Starting in this edition of the newsletter, you will see insect photos creeping and crawling in the margins and other small spaces on the pages. If you see a little critter that looks like one you have at your home, you can click on the UK Ent Facts website for more information. The website is: <http://www.ca.uky.edu/entomology/dept/entfacts.asp> or you can call the office for more information. Each month the Entomology website will be found in the Weblinks section of the newsletter. Remember, there are **good bugs** and **'bad' bugs!** Learn who you are dealing with! Happy Gardening!

County Extension Agent for Horticulture
kim.cowherd@uky.edu



Contact the Franklin County Extension Office at (502) 695-9035 if you would like to receive our newsletter via email or email requests to gil.thurman@uky.edu or kim.cowherd@uky.edu

If you **DO NOT** want to receive this newsletter or your address is incorrect, please notify us immediately.

