

**AGRICULTURE & NATURAL RESOURCES**



# OF COWS AND PLOWS

## AUGUST 2011

**Cooperative  
Extension Service**

Franklin County  
101 Lakeview Court  
Frankfort, KY 40601-8749  
(502) 695-9035  
Fax: (502) 695-9309  
[www.ca.uky.edu/ces](http://www.ca.uky.edu/ces)  
[ces.ca.uky.edu/Franklin](http://ces.ca.uky.edu/Franklin)

### FSA Provides Assistance for Livestock Losses From Heat Wave

Lexington, KY – July 21, 2011 - Livestock producers who incur eligible livestock death losses due to the recent extreme temperatures and other adverse weather events may be eligible for the USDA Farm Service Agency's Livestock Indemnity Program (LIP). LIP provides assistance to livestock owners and contract growers who experience livestock death losses in excess of normal mortality due to natural disasters.

For livestock losses that occur in calendar year 2011, producers will have until, the earlier of, 30 days after the livestock loss become apparent to file a notice of loss to FSA, or no later than October 31, 2011.

In addition, producers will have until January 30, 2012, to apply for payment.

Adequate documentation must prove the death of eligible livestock occurred as a direct result of an eligible adverse weather event in the calendar year for which benefits are being requested. If adequate verifiable proof of death records documentation is not available, a livestock producer may provide reliable records, along with verifiable beginning and ending inventory, as proof of death.

*(Continued on Page 2)*


### County Agricultural Investment Program (CAIP) Franklin County Cattlemen's Association Cost-share

- Ag Diversification - Cattle Genetics Improvement
- Cattle Handling - Commercial Poultry, Dairy, & Swine
- Farm Fencing Improvement - Farm Structure & Commodity Handling - Farmland Improvement & Utilization
- Goat & Sheep Diversification - On-farm Energy Efficiency & Production - On-farm Water Enhancement - Technology

**Applications and forms are available  
beginning August 15<sup>th</sup>, 8:05 a.m. and must be  
returned by 4:30, August 29th**

Franklin Co. Extension Office  
101 Lakeview Court  
(502) 695-9035

Or online at <http://ces.ca.uky.edu/franklin/>

**REQUEST FOR COMMENT:** The Kentucky Agricultural Development Board's annual review of programs and policies is quickly approaching. If you have a comment or suggestion for programs and policies of the Kentucky Agricultural Development Fund, then please e-mail your comments or suggestions to [govkyagpolicy@ky.gov](mailto:govkyagpolicy@ky.gov). 



#### WHAT'S INSIDE THIS MONTH...

Shared Use Manure Spreader .....	2
Cicada Killers are Emerging .....	2
KSU Goat and Sheep Summit .....	3
KY Master Stocker Program.....	4
KY Small Limited Resource, Minority Farmers Conference.....	5
Franklin Co Fair Beef Show Photos.....	6-7
Soil Conservation District Cost Share Information.....	7



Educational programs of Kentucky Cooperative Extension serve all people regardless of race, color, age, sex, religion, disability, or national origin. University of Kentucky, Kentucky State University, U.S. Department of Agriculture, and Kentucky Counties, Cooperating. Disabilities accommodated with prior notification.

Certifications of livestock deaths by third parties, who are not affiliated with the farming operation, may be accepted only if verifiable proof of death records or reliable proof of death records is not available.

Verifiable beginning and ending inventory records are also required with such third party certifications.

Producers need to contact their local FSA County Office at 1-888-229-9795 to sign up for LIP ☀️



## Shared Use Manure Spreader

The county is considering the purchase of a manure spreader to be rented out (like the no-till drill, lime spreader, chute scales, etc). In order for the state board and the GOAP to add a manure spreader we must first show farmer support. If you would like to have the option of renting a manure spreader please contact Keenan so we can show support. (502) 695-9035 or [kbishop@uky.edu](mailto:kbishop@uky.edu).

**RINSE AND RETURN**

Save all your triple rinsed chemical jugs.  
On September 9th from 10:00-12:00 you can drop them off at the County Road Garage off Lewis Ferry Road to be collected and recycled.





The cicada killer wasp can grow up to 2" in length.

## Cicada Killers are Emerging

After spending the winter as larvae in last years' burrows, cicada killer wasps are emerging to establish their 2011

tunnels. They choose sites in well-drained, light-textured soils in full sunlight that are near trees harboring cicadas. Common locations include along sidewalk or patio edges, in flower beds, or in lawns or fields where the grass stand is sparse. The wasps are solitary but in a few years, many burrows can develop in areas that provide the right conditions. While they are generally harmless, their normal activities can be unsettling or intimidating.

As long as their requirements are met, cicada killers will stay and thrive. Attempts to control them usually are only partially successful because: 1) the site remains attractive to new settlers even if most of the original inhabitants are irradiated and 2) immature stages of wasps will not be affected by the treatment and will survive to emerge next year.

Most encounters are with the stingless males that set up territorial perches where they wait and challenge intruders. Male wasps may approach people who enter their "turf" but quickly lose interest and are harmless. Females, which can sting, are too busy hunting cicadas to be bothered by humans. However, they may respond to direct disturbance of their burrows and will sting in self-defense.

Cicada killer tunnels usually have a distinctive U-shaped collar of loose soil around the opening. Individual tunnels are 12 to 18 inches long and may extend 6 to 12 inches deep. There are an average of 15 egg-shaped cells as side chambers to the tunnel, each containing a paralyzed cicada and a developing wasp larva. Development will be completed next year with the wasps emerging in late summer.

Cicada killer control may be desirable in situations where physical damage is occurring or the presence of the insects is causing significant distress. Sevin (carbaryl) dust, applied into the burrow opening is a good method to try but keep expectations realistic.

Dr. Lee Townsend, UK ☀️

# Kentucky State University, Goat and Sheep Summit

Kentucky State University is hosting a Goat (and Sheep) Summit on August 9-11, 2011. The cost is \$25 (includes lodging, meals & educational materials). It is free for 4-H members with an accompanying paid adult and the recommendation of their 4-H Agent or Certified Leader. School excuses will be provided. The sponsors are the USDA Risk Management Agency, USDA Southern SARE, the USDA Office of Advocacy and Outreach, Kentucky State University and others. For program information, please contact Dr. Ken Andries or Dr. Marion Simon.

## Day 1: August 9

Center for Sustainable Farms and Families, Kentucky State University Research Farm.

**Registration** -1:00 to 1:30 pm

**Welcome** 1:30 pm

Dr. Kimberly Holmes, KSU

Dr. Gary Palmer, ANR Director, UK

## Purpose of the Program

Dr. Ken Andries, Animal Science Specialist KSU

2:00 to 3:55 – On-Farm Performance Testing and Production Records – Ken Andries

4:00 to 4:15 - Break

4:15 to 4:55 – Tools and Equipment for the Goat Producer – Ken Andries

5:00 to 6:00 – Selecting Breeding Stock – Ken Andries, Terry Hutchens, Terry Gipson

6:00 to 7:30 – Dinner

7:30 to 8:30 – Evening speaker – Information on Marketing to Chef's – Culinary School

Drive to the Capital Plaza Hotel & check-in

## Day 2: August 10

7:00 to 8:00 - Breakfast

8:00 to 8:30 – Travel to KSU Farm (bus provided)

## Track A

8:30 to 10:00 - Business Records for Small Producers – Marion Simon

10:00 to 10:15 - Break

10:15 to 11:00 - Continue with Business Records

11:05 to Noon – Value Added Marketing: The 4 Hills Experience – Jim Mansfield

Noon to 1:15—Lunch at KSU

1:15 to 2:10 - Browsing and grazing behavior of goats and how to use it to your advantage – Terry Gipson

2:15 to 3:10 - Using goats to control invasive browse, a field experience – Terry Hutchens

3:15 to 3:30 – Break

3:30 to 4:25 - Alternative Forages for sheep and goats – Ken Andries

4:30 to 5:25 - Nutritional considerations for small ruminants – Terry Hutchens

5:30 to 6:00 - Forage Quality: Importance to your Farm – Kim Field

## Track B

8:30 to 10:00 - Introduction to the Goat Tool Kit – Dianne Helwig.

10:00 to 10:15 - Break

10:15 to Noon - Continue Tool Kit

Noon to 1:15 - Lunch at KSU

1:15 to 2:10 - Beginning Business Records and Planning – Marion Simon

2:15 to 3:15 – Meeting the nutritional needs of small ruminants – Terry Hutchens

3:15 to 3:30 - Break

3:30 to 6:00 - Selection, fitting, and showing sheep – J.R. Zinner.

## Both Groups

6:00 to 7:30 - Dinner

7:30 to 8:30 - Evening speaker – NRCS Speaker

## Day 3: August 11

7:00 to 8:00—Breakfast

8:00 to 9:00—Checkout of rooms and travel to KSU research farm

9:00 to 9:55 – Essentials to a successful small ruminant enterprise – Ken Andries.


10:00 to 10:55 - Electric Fencing options and issues/ demonstration - Jeremy McGill

11:00 to 11:55 – Panel discussion and review/ evaluation of program.

Noon to 1:20 - Lunch

Adjourn

## Youth Program

9:00 to Noon – Selection, fitting, and showing goats – Kevin Kidwell. 

**Starting this  
Fall!**

# KENTUCKY MASTER STOCKER PROGRAM

The Master Stocker program is an educational program that is open for any beef producer who is involved or interested in stocker cattle. The program includes eight classroom sessions and one field trip. Aspects covered will improve the understanding of best management recommendations for stocker and backgrounding operations.

## Sessions offered

- Enterprise Budgeting and Cost of Production
- Economic Risk Management Tools
- Marketing
- Forage Management
- Health Management
- Nutrition Management
- Environmental Compliance and Best Management Practices
- Animal Handling, Transporting, and Welfare
- Field Trip



### Completion Requirements:

- Required to attend all 8 sessions
- Must have a valid Beef Quality Assurance Number
- Have an Approved water Quality Management Plan



## Benefits of Completing the Program:

- ✓ Valuable material from each session
- ✓ Economic growth within your herd
- ✓ Learn the latest technology for the stocker enterprises

For more information please contact your local county extension office or  
Blair Knight

270.365.7541 ext 297 [blair.knight@uky.edu](mailto:blair.knight@uky.edu)



This program is funded through the Kentucky Agricultural Development Fund and delivered by the University of Kentucky College of Agriculture



# **2011**

## **Kentucky Small, Limited Resource, Minority Farmers Conference**



### *Getting the Most in a Changing Economy*

*Photo by Charles Weibel, KSU Land Grant staff member*

**Capital Plaza Hotel, Kentucky State University  
and the  
Kentucky State University Research Farm  
Frankfort, Kentucky  
November 15-17, 2011**

### **Sponsors**

**Kentucky State University  
Kentucky Department of  
Agriculture  
Kentucky Division of  
Conservation  
Kentucky Division of Forestry  
University of Kentucky-  
College of Agriculture  
Community Ventures  
Corporation**

**USDA and Agencies  
Office of Advocacy and  
Outreach  
Farm Service Agency  
Natural Resources  
Conservation Service  
Rural Development  
National Agricultural  
Statistics Service  
Risk Management Agency  
Sustainable Agriculture  
Research and Education**

**For more information call 502-597-5905 or  
e-mail [louie.rivers@kysu.edu](mailto:louie.rivers@kysu.edu)**

# Images from the Franklin County Fair Beef Show

(Right) Tracey Huckeba, her daughter Cassie, Jackie Branham, Linda Eldridge and Cindy Tucker, Fair volunteers, work the entry registration table at the 2011 Beef Show.



(Left) Ryan Halligan of the Franklin County High School FFA Chapter is shown exhibiting his heifer to the judge in the Geilbvieh Heifer Championship class.

(Right) Members of the Junior Fair Board (L-R) Brandon Waller, Brooke Stiger (secretary), Chris Cox and Emily Goodwin (vice-president) preparing the ribbons for the Beef Show.



(Left) Members of the 2011 Beef Show Committee L-R herb Mefford (co-chair), Keenan Bishop, Matt Craig, Ricky Cornish, Brent Pool (co-chair), Coy Trapp (rear), Brandon Snell and Keith Snell. Missing from the picture is John Hanly and Johanna Cornish.

**LOCAL COST SHARE SIGN-UP  
AUGUST 1 – AUGUST 12, 2011**

**Franklin County Conservation District  
103 Lakeview Court  
Frankfort, KY 40601  
Contact: Eric Phillips, 695-5203  
Extension 3**

[www.franklincountyconservationdistrict.com](http://www.franklincountyconservationdistrict.com)

**50% Cost Share Up to \$500.00 on each program**

- Reseeding – Must present soil test**
- Lime - Must present current soil test**
- Pasture Chemicals**
- Hay Wrap**

\*\*\*\*\*

**Rock Gateways/Alleyways**

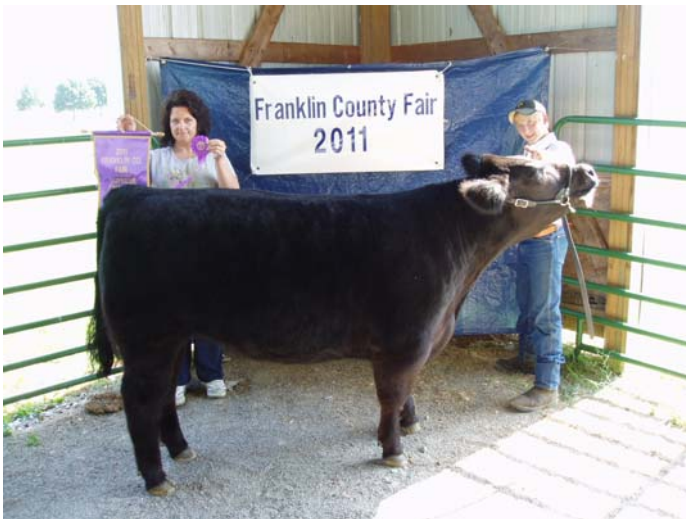
- District provides 40 feet filter fabric and 20-22 tons of rock per gateway**
- May apply for two rock gateways**



(Above) Ed Hart and son Zack confer before entering the Heavy Weight Steer Class which Zack won with his 1,350lb steer.



(Above) Mattie Craig and her mother Christy with the Champion Saler Heifer owned by Willis Farms that she exhibited at the Franklin County Beef Show. Mattie was also awarded Junior Showman Champion.



(Above) Todd Craig exhibiting his Supreme Champion Steer. Holding his championship banner is Dena Valentine. The award was sponsored by John Hanly, Coy Trapp and the Franklin County Beef Cattle Association. Todd was also the winner of the Franklin County Showmanship and is the son of Matt and Christie Craig.



(Above) TJ Wooldridge holds the champion Charolais Heifer which was shown by Becca Harrod.

COOPERATIVE  
EXTENSION  
SERVICE



**Cooperative Extension Service**

*University of Kentucky  
Franklin County  
101 Lakeview Court  
Frankfort KY 40602-8749*

NONPROFIT ORG  
US POSTAGE PAID  
FRANKFORT, KY  
PERMIT 10090

RETURN SERVICE REQUESTED



[http://ces.ca.uky.edu/  
Franklin](http://ces.ca.uky.edu/Franklin)

Life on a farm is a school of patience; you can't hurry the crops or make an ox in two days.  
-Henri Alain

*Keenan R Bishop*  
Keenan Bishop

**County Extension Agent for Agriculture and Natural Resources**

Contact the Franklin County Extension Office at (502) 695-9035 if you would like to receive our newsletter via email or email requests to [gil.thurman@uky.edu](mailto:gil.thurman@uky.edu) or [kbishop@uky.edu](mailto:kbishop@uky.edu)

If you **DO NOT** want to receive this newsletter or your address is incorrect, please notify us immediately.