

Floyd
County
February
2009

Ag & Natural Resources Newsletter

Floyd County Extension

COOPERATIVE EXTENSION SERVICE



UNIVERSITY OF KENTUCKY
College of Agriculture

Inside this issue:

Master Cattleman	2
Cattlemen's Drought Recovery Series	2
Home & Garden Expo	3
Timely Gardening Tips	4/5

I could not think of a better way to start off a new year than by saying "Thank You". Many thanks to all of the individuals and organizations that work hand in hand with us here at the UK Floyd County Extension Office in following through with programs that hopefully improve our local communities in significant and lasting ways. Without your tireless efforts our programs simply would not be the same. As I sit here and wait for the warmer, longer days of spring I find myself thinking of just how many people have contributed to our many activities during the past year. While many lament that "civic engagement and volunteerism" has greatly declined in our society I am happy to conclude that, based on my own humble observations, people are still ready and willing to pitch in and lend a hand when they believe it is for the betterment of their local communities. I tip my hat to all of you who have pitched in and look forward to working with you in 2009. -Ray Tackett-



How to Grow Ginseng Successfully

Date: February 24
Time: 6-8pm
Location: **Mountain Arts Center**
50 Hal Rogers Dr
Prestonsburg, KY

REFRESHMENTS
PROVIDED!

Dr. Terry Jones, UK horticulture specialist, will cover all the basics on how to grow your own ginseng. Topics will include where to purchase supplies, how to choose the best growing sites, how to market ginseng, and much more. Call 886-2668 to register for this free community class.

see blue.
in the College of Ag

Floyd County Extension Service
921 South Lake Drive
Prestonsburg, Kentucky 41653
Phone: 886-2668
Fax: 886-148
E-mail atackett@uky.edu

Ray Tackett

County Extension Agent for
Agriculture & Natural Resources

Master Cattleman

Floyd County will be participating in Master Cattleman this Spring. The Master Cattleman Program consists of 10 - 4 hour sessions focusing on beef production and the beef industry. The program is designed to enhance profitability of beef operations through equipping farmers with vital information. The program provides participants with reference materials on the 10 educational sessions and introduces them to several different types of record keeping programs. In addition, Master Cattleman allows producers to network with specialists, facilitators and other beef producers.

The program will be held at the Johnson Extension Office in Paintsville. The cost of the program is \$50.00.

If you have any questions or would like to sign up for the Master Cattleman program, please call the Floyd County Extension Office at (606)886-2668.

February 24	Orientation/BQA Session
March 3	Facilities
March 10	Forages
March 17	Reproduction
March 24	Genetics
March 31	Nutrition
April 7	Management
April 14	Herd Health
April 21	Environment
April 28	Marketing
May 5	End Product

Cattlemen's Drought Recovery Series

Each of the following programs will begin at 6 pm at either the Lawrence or Johnson County Extension Office. Dinner will be provided each evening.

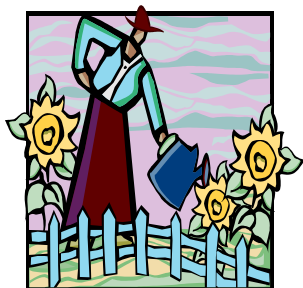
If you are interested in attending one or both of these meetings, please call the Floyd County Extension Office at 886-2668 to reserve a spot.

Directions will be available when you call to register for these sessions.



Tuesday, February 10th	Low Cost and Efficient Feeds
Lawrence County	Dr. Jeff Lehmkuhler, University of Kentucky
Tuesday, February 17th	Pasture Renovation
Johnson County	Dr. Ray Smith, University of Kentucky

UK COOPERATIVE EXTENSION SERVICE
UNIVERSITY OF KENTUCKY — COLLEGE OF AGRICULTURE



2009

Home & Garden Expo

March 28, 2009

Jenny Wiley State Park Convention Center

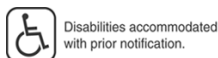
9:00 a.m.~12:00 p.m.



The Home & Garden Expo features various sections with on-going Home & Garden presentations and demonstrations. There is an area showcasing products and services of area businesses and question and answer booths with free literature on many topics.

You and your family can also have fun with “hands-on” youth and family activities. There are free herb, vegetable, and flower seeds available to all participants. Come enjoy, have fun, and learn!

For dates beyond 2009 call (606) 886-2668.



Educational programs of the Kentucky Cooperative Extension Service serve all people regardless of race, color, age, sex, religion, disability, or national origin.

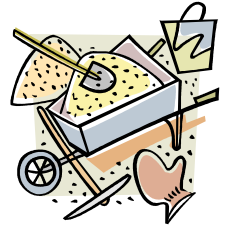
Timely Gardening Tips.... Continued

Trees & Shrubs

- Don't prune landscape trees and shrubs in January or early February, since that would make them more susceptible to winter injury, and you would be cutting off flower buds of spring bloomers. However, if you want to "force" bloom indoors, in mid-winter, bring in a few branches of flowering-quince, flowering dogwood, forsythia, star magnolia, flowering crabapple, flowering cherry, white spireas and viburnums, put the stems in a vase of warm water with a floral preservative, and "force" them into bloom indoors for a winter bouquet.
- Many trees and shrubs can be started by rooting hardwood stem cuttings in the winter. Take 4 to 6 inch cuttings, wound the base of the stem with a knife, dip in rooting hormone, and stick in trays or pots filled with peat and perlite or sand. Keep moist but not wet. Try propagating plants such as privet, forsythia, hydrangea, wisteria, honeysuckle, willow, poplar, dogwood potentilla, elderberry, crapemyrtle, roses, flowering plum and spirea.



- Keep mulch pulled back from tree trunks to prevent nesting and gnawing by field mice and voles.
- Trees and shrubs can be fertilized in late February or early March.
- Trees and concrete are both easily damaged by deicing salts. Use sand instead of salt, especially near sensitive plants such as arborvitae, beech, holly, dogwood, hemlock, Scotch pine and white pine.



As Spring nears please remember to call us at here at the UK Floyd

Extension Office if you have any questions on how to care for plants that were damaged by the recent historic ice fall we experienced. We have lots of information on how to "clean up" damaged plants.