

## GREEN RIVER PRE-CONDITIONED CATTLE SALE

### Source & Age Verified

December 3 - Heifers

December 10 - Steers

### Basic Requirement

January 20 - Heifers & Steers

### Source & Age Verified

February 11 - Heifers

February 18 - Steers

### Source & Age Verified

April 29 - Heifers & Steers

## NEW STATE REQUIREMENTS FOR ALL SALES

- ⇒ Heifers are guaranteed open at time of sale and steers are guaranteed not to be bulls!! Seller agrees to reimburse buyer \$200.00 for pregnant heifers or intact bulls. All claims will be properly verified by a veterinarian within four (4) months of sale.
  - ⇒ Calves must have access to a free choice mineral supplement which contains a minimum of 1400 ppm copper (no copper oxide), 26 ppm selenium, 3000 ppm zinc, 3000 ppm manganese, and a salt content of 18-25%.
- ### TERMS
- ⇒ \$1.00/head consignment fee will be held by sale barn.
  - ⇒ Source and Age Verified ear tag will be \$3.50
  - ⇒ Basic Requirement ear tag will be \$1.50.

## SOURCE & AGE VERIFIED CRITERIA

- ⇒ Calves which fail grade requirements and are considered outs will not be sold.
- ⇒ All calves must be weaned a minimum of 45 days prior to sale.
- ⇒ **It is mandatory that all cattle have free choice of required analysis mineral.**
- ⇒ All calves must be able to eat from a feed trough or bunk and drink water from a tank or automatic waterer.
- ⇒ All surgery (castration and dehorning) should have been done and completely healed prior to sale.
- ⇒ All calves must be completely dehorned and healed.
- ⇒ Dewormed with **Ivomec or Eprinex** brand endectocide. Must be applied no more than 60 days prior to sale.
- ⇒ Vaccinated and boosted for Four-Way Respiratory (IBR,PI<sub>3</sub>,BRSV,BFD): **1st Vaccine—Elite 4 or Express 5, Booster shot—Express 5.** The booster vaccine must be given a minimum of 14 days prior to sale and be a modified live vaccine. (*BRSV may be killed or MLV.*) The earliest any vaccine should be given is not more than 90 days prior to sale.
- ⇒ Vaccinated for Clostridial 7-Way using **ALPHA 7**
- ⇒ Pastuerella vaccination will be required using **Respishield HM or Pulma Guard PHM-1**
- ⇒ Each consigner will certify that health and management practices were implemented and provide receipts of medication purchases.
- ⇒ Cattle that are yearlings and that have been weaned 90 days by the time of the sale will not be required to re-vaccinate if all health standards were completed previously, only dewormed.
- ⇒ All cattle must be farm of origin and age verified.
- ⇒ Producers must enroll calves in the Integrated Traceability Solutions Process Verified Program.

## BASIC REQUIREMENT CRITERIA

- ⇒ All calves must be weaned a minimum of 45 days prior to sale.
- ⇒ **It is mandatory that all cattle have free choice of required analysis mineral.**
- ⇒ All calves must be able to eat from a feed trough or bunk and drink water from a tank or automatic waterer.
- ⇒ All surgery (castration and dehorning) should have been done and completely healed prior to sale.
- ⇒ All calves must be completely dehorned and healed.
- ⇒ Dewormed with any brand of endectocide. Must be applied no more than 60 days prior to sale.
- ⇒ Vaccinated and boosted for Four-Way Respiratory (IBR,PI<sub>3</sub>,BRSV,BFD): The booster vaccine must be given a minimum of 14 days prior to sale and be a modified live vaccine. (*BRSV may be killed or MLV.*) The earliest any vaccine should be given is not more than 90 days prior to sale.
- ⇒ Vaccinated for Clostridial 7-Way.
- ⇒ Pastuerella vaccination will be required.
- ⇒ Each consigner will certify that health and management practices were implemented and provide receipts of medication purchases.
- ⇒ Cattle that are yearlings and that have been weaned 90 days by the time of the sale will not be required to re-vaccinate if all health standards were completed previously, only dewormed.

## OBJECTIVE

To provide an opportunity for producers to group cattle into marketable lot sizes, to maintain identification of health and management practices, and to provide a positive reputation toward calves marketed from the Green River Area of Kentucky.

## SALE TECHNIQUE

Cattle will be co-mingled into the following contemporary groups:

### Breed Type:

Black (Angus based)  
Black Cross  
Cross-bred  
Earred

### Frame and Muscle:

Medium to Large Frame #1  
Medium to Large Frame #2  
Small Frame #1

### Weight:

Minimum weight will be 500 pounds with groups broken at 75-pound intervals.

All others will be classified as outs, including stags, and CPH tags will be removed from the outs.

The sale will be pre-announced and cattle will be offered for sale in the following order:

Light to heavy steers, then light to heavy heifers and other groups that do not meet the grade description, and then the "out" cattle.

COOPERATIVE  
EXTENSION  
SERVICE

**UK**

University of Kentucky  
College of Agriculture

Educational programs of the Kentucky Cooperative Extension Service serve all people regardless of race, color, age, sex, religion, disability or national origin.

## Cooperative Extension County Offices

### *In Kentucky:*

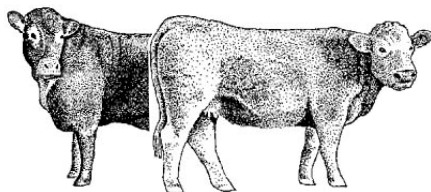
Daviess County—270/685-8480  
Hancock County—270/927-6618  
Henderson County—270/826-8387  
Hopkins County—270/821-3650  
McLean County—270/273-3690  
Muhlenberg County—270/338-3124  
Ohio County—270/298-7441  
Union County—270/389-1400  
Webster County—270/639-9011

### *In Indiana:*

Spencer County—812/649-6022  
Perry County—812/547-7084

### *KBN Facilitator:*

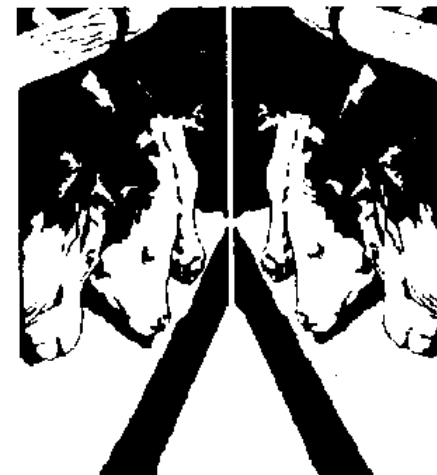
Ben Lloyd—270/993-1074



**For more information or to register,  
contact your County Extension  
Agent.**

Trade names were decided by the Green River Area CPH Sale Committee. No endorsement by the Cooperative Extension Service is intended, nor criticism implied of similar products that are not named.

## Green River Area CPH45 Pre-Conditioned Cattle Sale



## Kentuckiana Livestock Market

### *Sponsored by:*

*Green River Area Beef Improvement Group  
Green River Area Cooperative Extension  
Daviess County Cattlemen's Association  
Kentucky Beef Network*

### *With support of the*

*Kentucky Department of Agriculture*