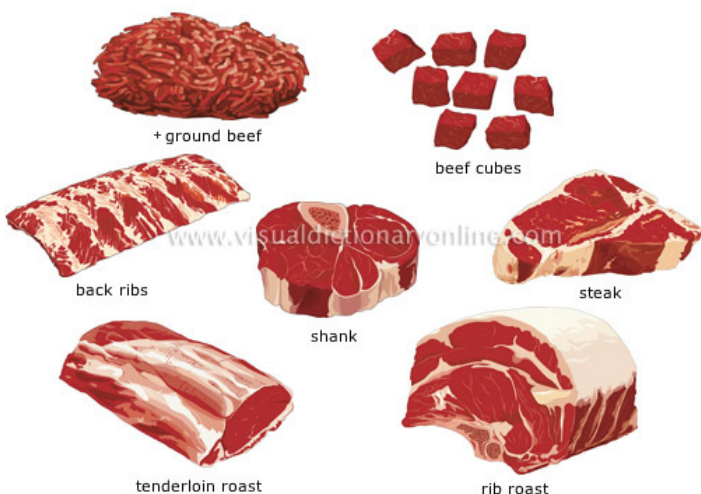


Proper Beef Cut Selection and Preparation Seminar

1:00 PM

Tuesday, December 6th

Cumberland County Extension Service



Dr Gregg Rentfro, University of Kentucky Meat Science Specialist will demonstrate the different wholesale and retail cuts of beef and how to select for the best quality when making choices at the retail meat counter.

Ms. Allison Smith, Kentucky Beef Council will demonstrate the proper preparation techniques for different cuts.

[Taste Testing Available](#)

**For more information, contact
Greg Tompkins or
Debbie Messenger at Cumberland
County Extension Office by
calling
(270) 433-7700**

